



Idea Plan Ventilation Inlets and Ducts

No. IP 723-36

This Idea Plan is intended to provide educational information and ideas concerning ventilation inlets and air ducts. The following attached drawings are based on historical plans and may not meet design and construction standards for your area:

Ventilation Slot Intakes (PSU 302)

Fresh Air Inlet for Older Two-Story Barns (PSU 504)

For more complete information, the following comprehensive handbook covering the many aspects of mechanical ventilation systems is available:

MWPS-32—Mechanical Ventilating Systems for Livestock Housing (1990).
\$6.00 (Contact office below for current pricing).

Order from your local county Penn State Cooperative Extension Office or the Publications Distribution Center, The Pennsylvania State University, 112 Agricultural Administration Building, University Park, PA 16802-2602 (Telephone: 814-865-6713 or Fax: 814-863-5560).

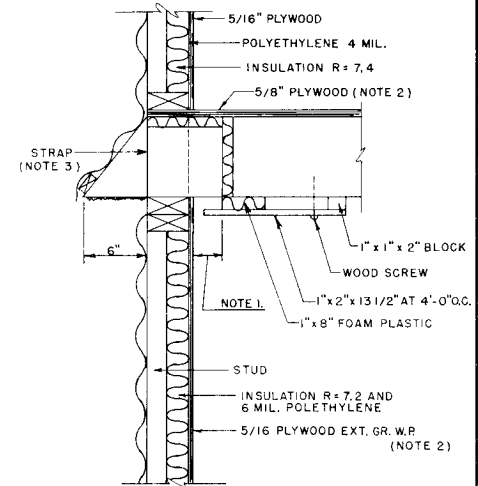
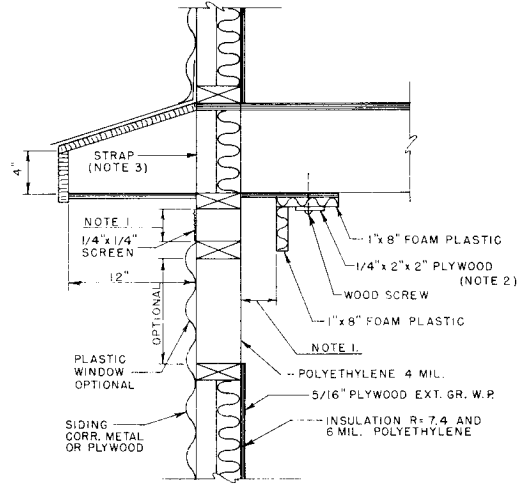
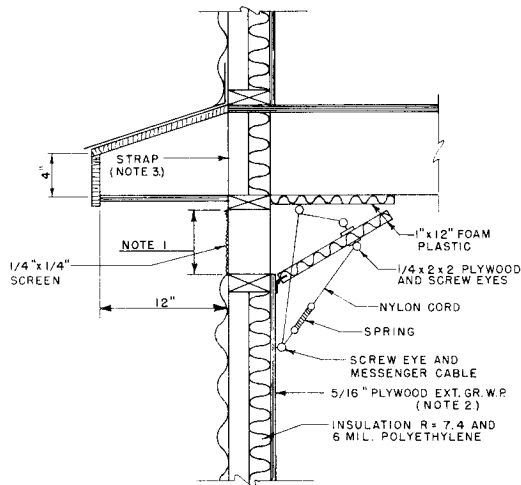
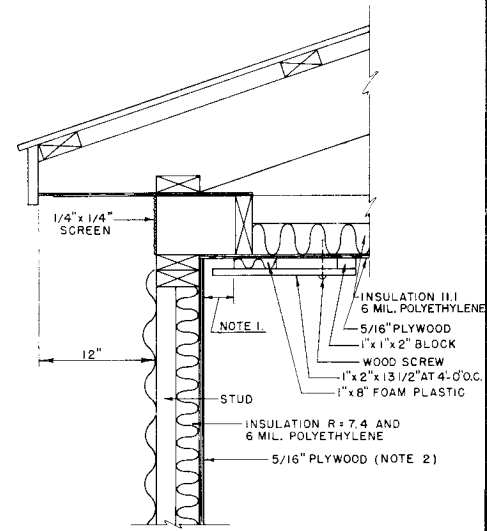
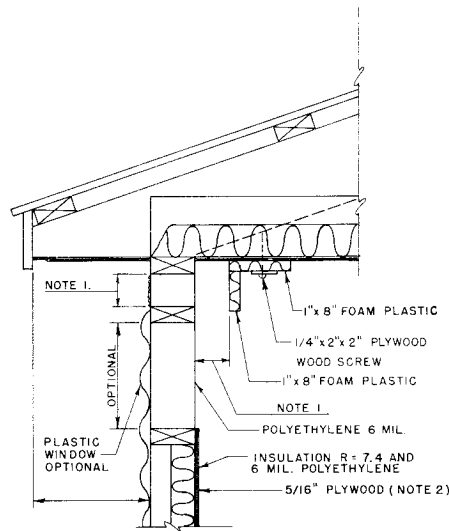
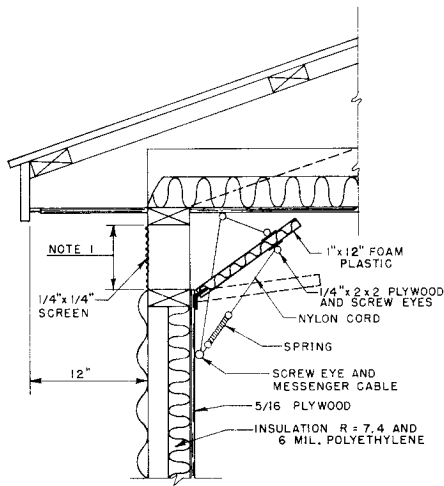
The Department of Agricultural and Biological Engineering at Penn State has a variety of educational material available related to agricultural and biological engineering. This material is intended to help Pennsylvania farmers and others develop buildings and facilities for modern, environmentally-compatible farm facilities. The material can be used in conjunction with county extension staff, builders, suppliers, consulting engineers, the Natural Resources Conservation Service, financial management advisors, farm lenders, veterinarians, and others to assemble a facilities plan suitable for local conditions.

Publications are available in the areas of agricultural safety and health, animal housing systems, building and farmstead planning, crops and greenhouses, machinery systems and tractors, residential housing, soil and water resources, and solid waste management. Contact your county Penn State Extension Office for more information on these subjects. You can also obtain an index of publications concerning the above areas by calling, writing, faxing or e-mailing:

Department of Agricultural and Biological Engineering
246 Agricultural Engineering Building
University Park, PA, 16802-1909
Telephone: 814-865-7685
Fax: 814-863-1031
E-mail: agbioeng@psupen.psu.edu.

This publication is available in alternative media on request.

The Pennsylvania State University is committed to the policy that all persons shall have equal access to programs, facilities, admission, and employment without regard to personal characteristics not related to ability, performance, or qualifications as determined by University policy or by state or federal authorities. The Pennsylvania State University does not discriminate against any person because of age, ancestry, color, disability or handicap, national origin, race, religious creed, sex, sexual orientation, or veteran status. Direct all inquiries regarding the nondiscrimination policy to the Affirmative Action Director, The Pennsylvania State University, 201 Willard Building, University Park, PA 16802-2801; tel. (814) 863-0471; TDD (814) 865-3175.



NOTES:

1. SLOT OPENING, 3 1/2" BOTH SIDES OR 7" ONE SIDE.
2. ALL PLYWOOD SHALL BE EXTERIOR GRADE WITH WATERPROOF GLUE.
3. PLATFORM STUD FRAMING SHALL BE SECURED AGAINST WIND STORM DAMAGE BY 24 GA. STEEL STRAPS WITH FOUR 8d NAILS IN EACH STUD.

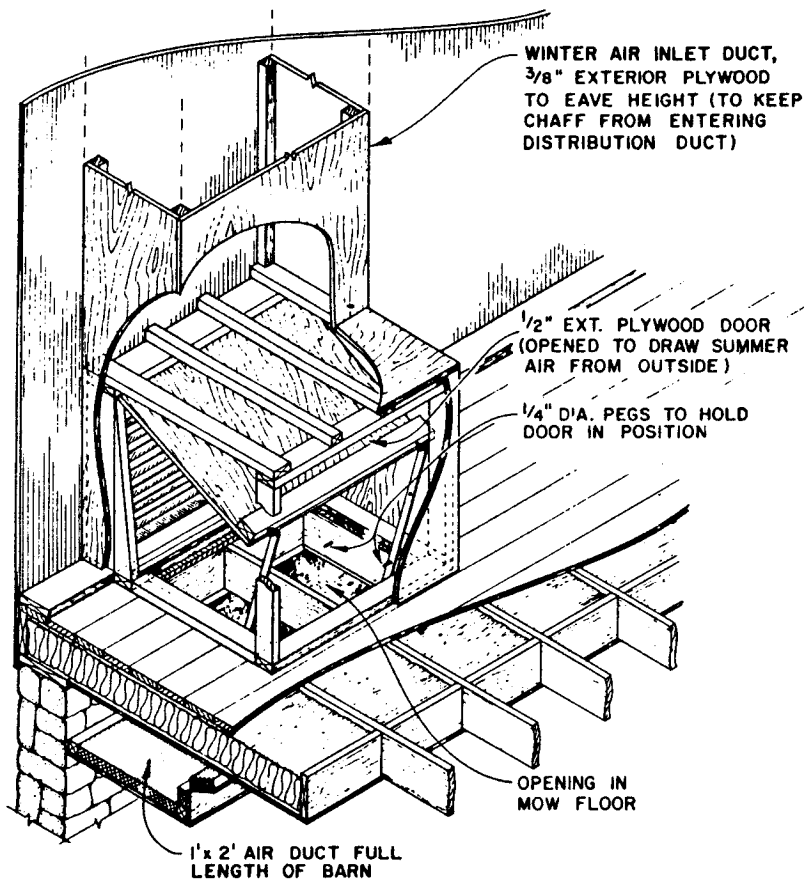
THE PENNSYLVANIA STATE UNIVERSITY
AGRICULTURAL EXTENSION SERVICE

VENTILATION SLOT INTAKES

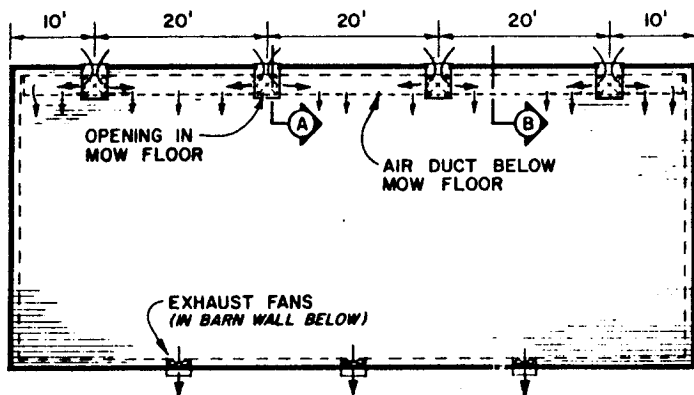
DRWN. BY: M.J.T.
CHKD. BY: F.B.G.
DATE: DEC., 1965

ORDER NO.
723-302

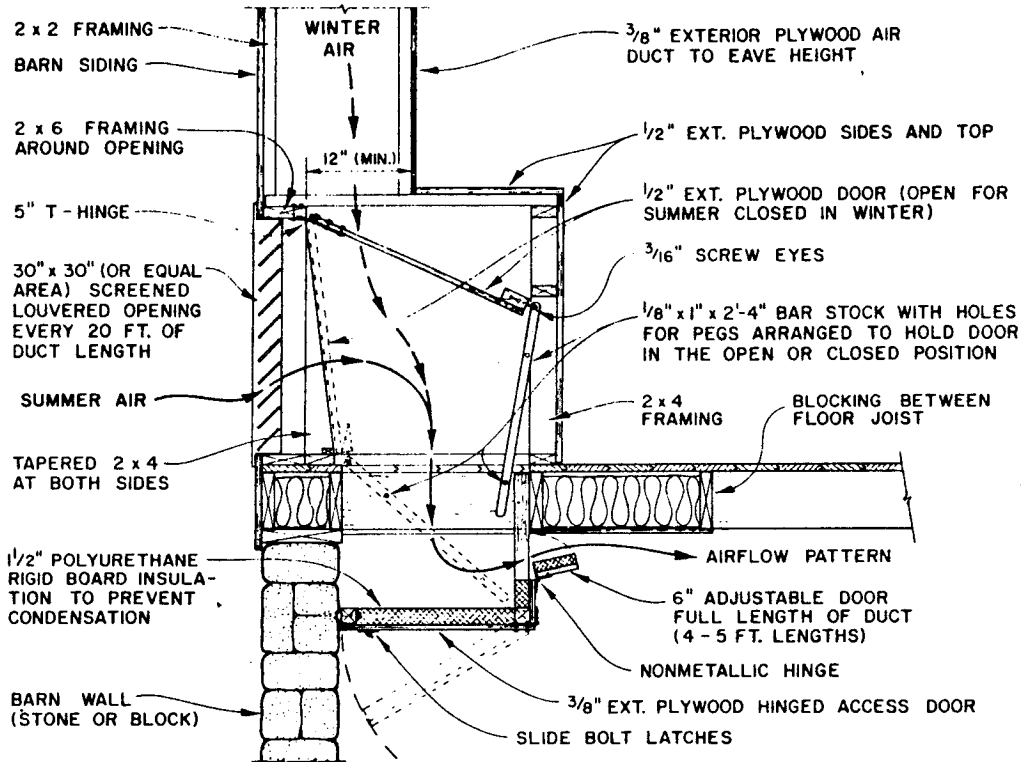
SHEET 1 OF 1



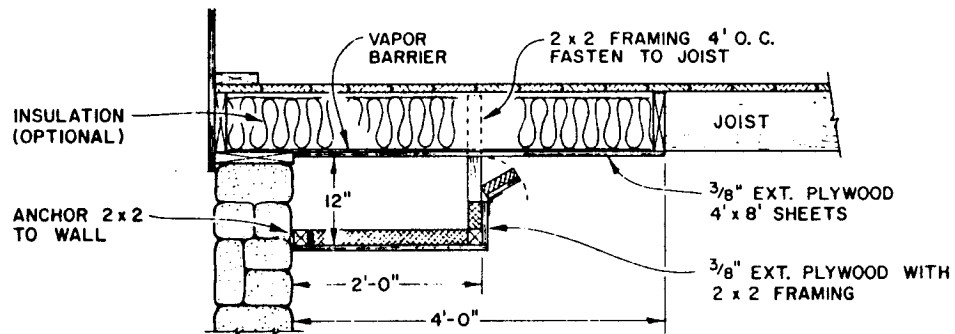
ISOMETRIC VIEW



EXAMPLE: 80 FT. BARN



SECTION VIEW - A



SECTION VIEW - B

NOTE: IF HEAD ROOM IS A PROBLEM THE DUCT CAN BE 6" x 24" OR 1' x 1' WITH LOUVERED OPENINGS EVERY 12'

SUGGESTED DESIGN WHERE WINTER NORTH WINDS MIGHT BLOW INTO LOUVERED OPENING

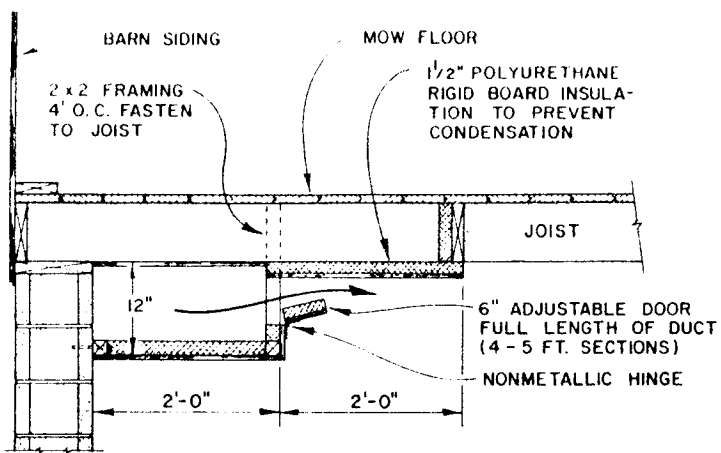
SHEET ① OF ②

Cooperative Extension Programs
University Extension
The University of Wisconsin
United States Department of Agriculture
Wisconsin Counties Cooperating
Department of Agricultural Engineering
Madison, Wisconsin 53706

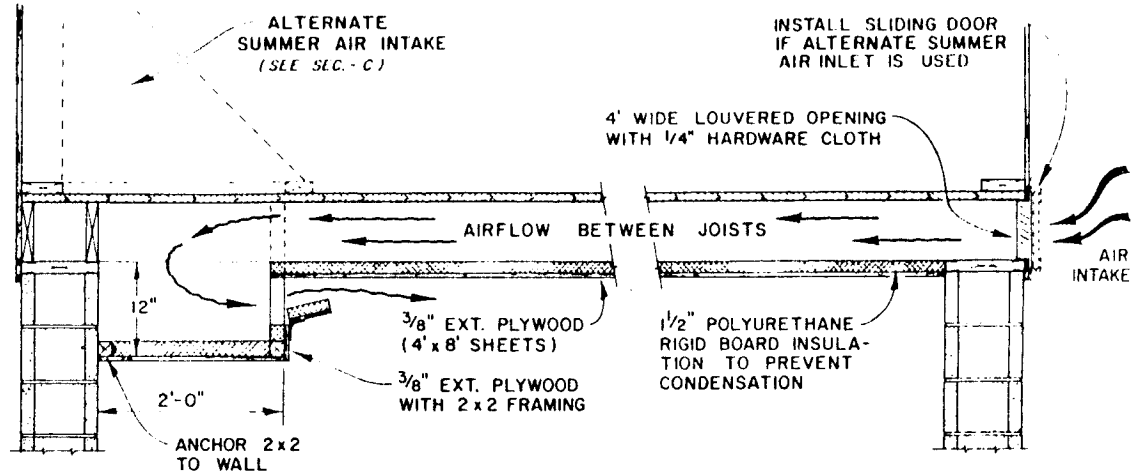
FRESH AIR INLET
FOR OLDER TWO STORY BARNs

Prepared By: B.J.H. - T.J.B. - A.H. Date: Nov. 1981

830N-3 14CX

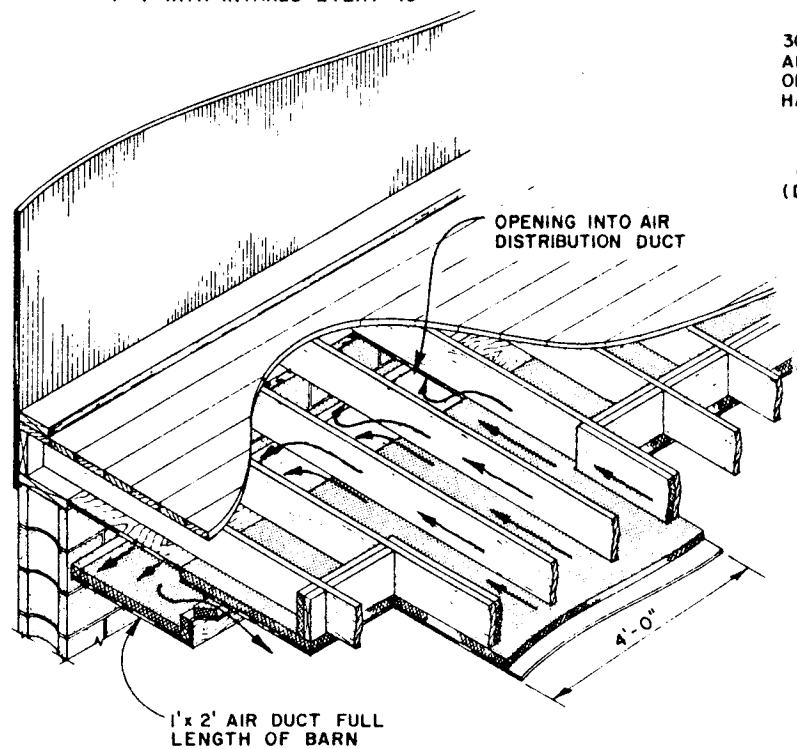


SECTION VIEW - B

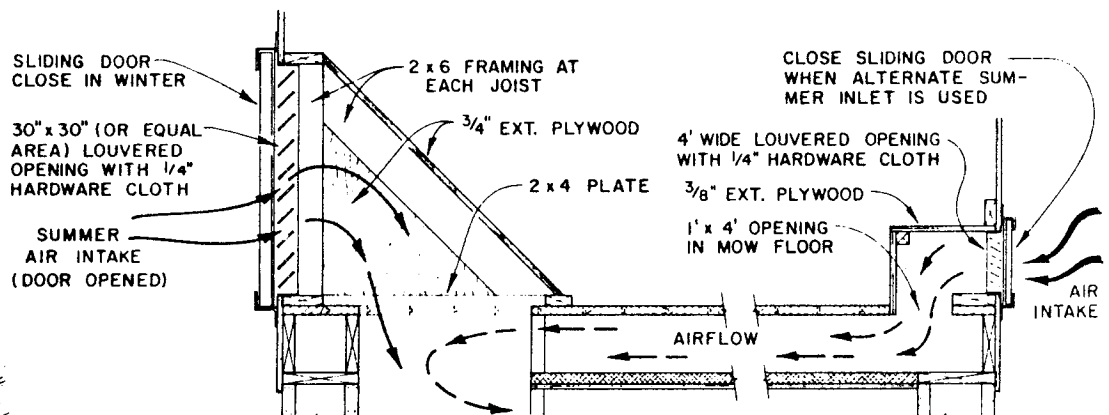


CROSS SECTION VIEW A - A

NOTE: IF HEAD ROOM IS A PROBLEM THE DUCT CAN BE 6" x 24" OR 1' x 1' WITH INTAKES EVERY 10'

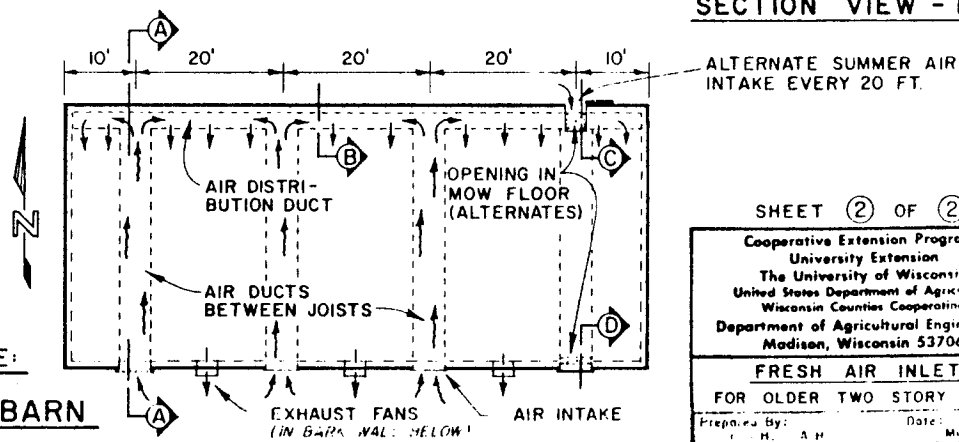


ISOMETRIC VIEW



ALTERNATE SUMMER AIR INTAKE SECTION VIEW - C

ALTERNATE MOW FLOOR INTAKE SECTION VIEW - D



SHEET 2 OF 2

Cooperative Extension Programs
University Extension
The University of Wisconsin
United States Department of Agriculture
Wisconsin Counties Cooperating
Department of Agricultural Engineering
Madison, Wisconsin 53706

FRESH AIR INLET
FOR OLDER TWO STORY BARN

Prepared by: H. A. H. Date: May 1964