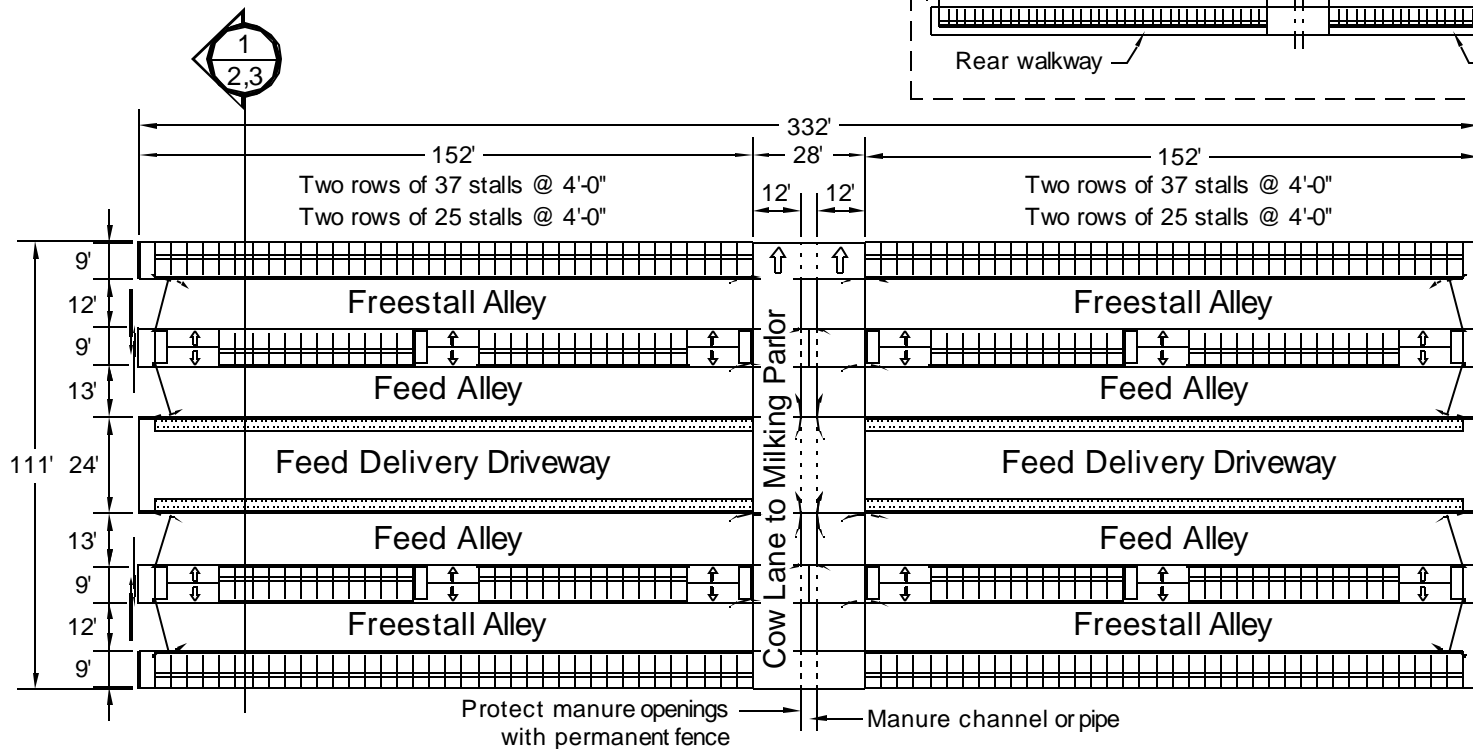
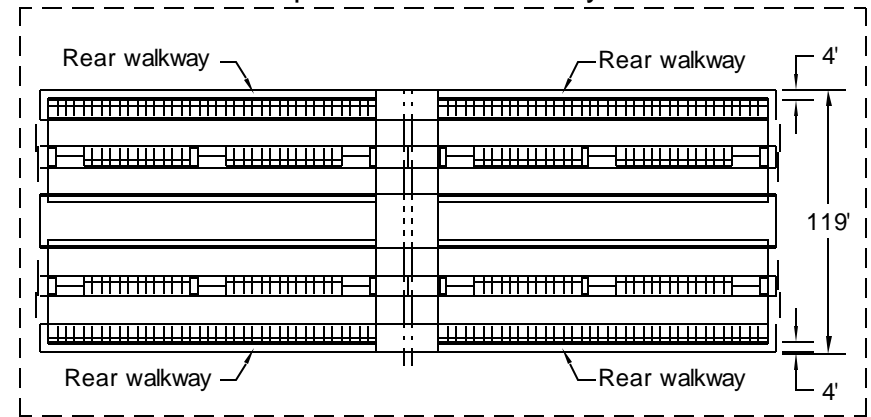




Optional Rear Walkway



Notes :

- Structural details to be designed and constructed in accordance with local codes and conditions.
- Provide a crossover every 15 to 20 stalls (60' - 80').
- Provide minimum of two waterer locations per group and 3" of trough length per cow in all milking groups.
- Provide worker pass throughs at/in gates and spaced along feed barrier for safety and handling ease.
- Contact milk inspection agency when developing plans for milking cows.

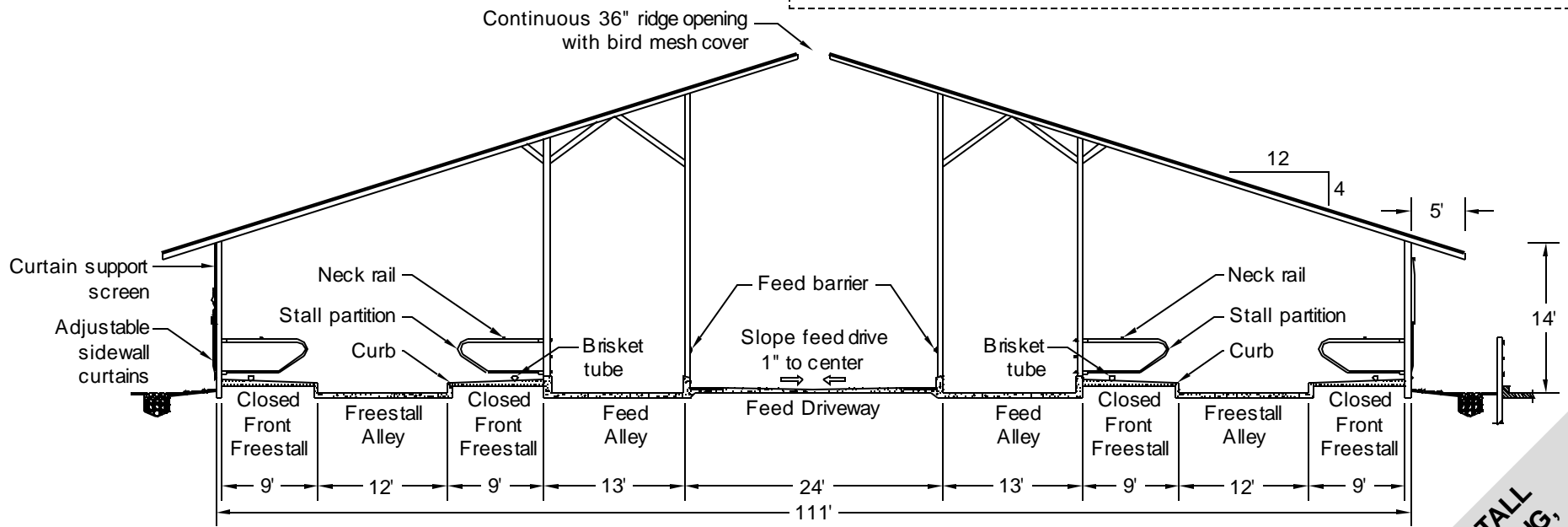
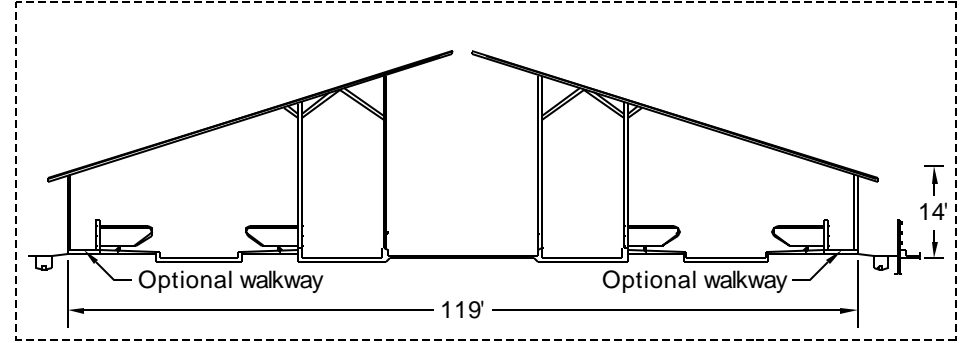
Related Detail Sheets :

- DIP 821 Cow Freestall (Cubicle), Types and Details
- DIP 831 Fenceline Feed Barriers
- DIP 841 Watering Locations for Dairy Cattle
- DIP 851 Freestall Crossovers and Floor Surface Details

FOUR ROW TAIL TO TAIL FREESTALL SHELTER, DRIVE-THROUGH FEEDING, 248 STALLS - 4 GROUPS
 Graves, McFarland, Tyson, Wilson
 Date: 11/29/05 Sheet #1 of 3



Optional Rear Walkway



Post and Beam Roof
Cross Section 1
2

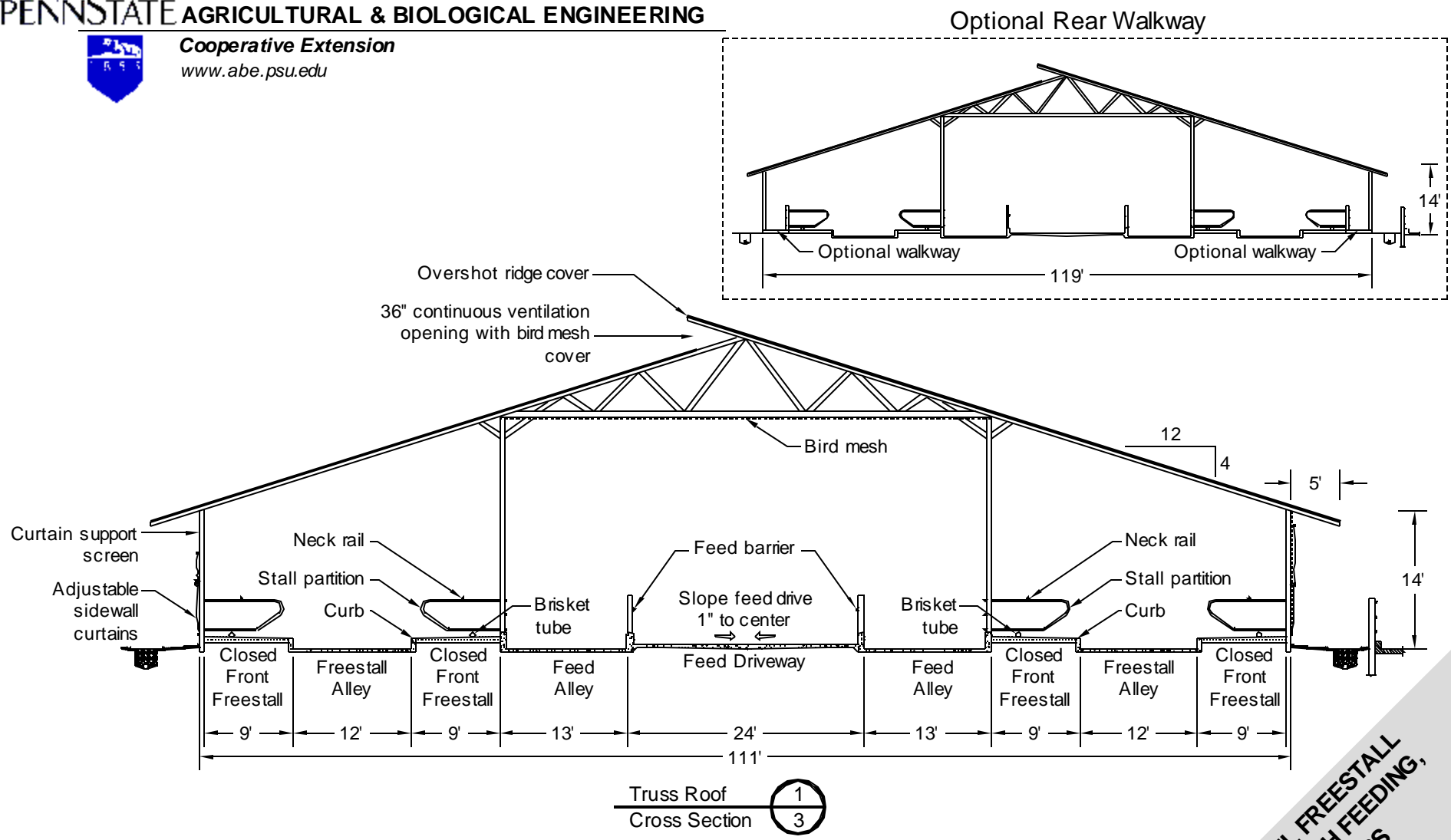
Notes :

- Structural details to be designed and constructed in accordance with local codes and conditions.
- Orient ridge perpendicular to prevailing winds.
- Contact milk inspection agency when developing plans for milking cows.

Related Detail Sheets :

- DIP 802 Typical Sidewall - Freestall Row
- DIP 811 Ridge Openings for Naturally Ventilated Dairy Shelters
- DIP 821 Cow Freestall (Cubicle), Types and Details
- DIP 831 Fenceline Feed Barriers
- DIP 851 Freestall Crossovers and Floor Surface Details

FOUR ROW TAIL TO TAIL FREESTALL SHELTER, DRIVE-THROUGH FEEDING, 248 STALLS - 4 GROUPS
Graves, McFarland, Tyson, Wilson
Date: 11/29/05 Sheet #2 of 3



Notes :

- Structural details to be designed and constructed in accordance with local codes and conditions.
- Orient ridge perpendicular to prevailing winds.
- Face overshoot ridge opening away from prevailing winds.
- Contact milk inspection agency when developing plans for milking cows.

Related Detail Sheets :

- DIP 802 Typical Sidewall - Freestall Row
- DIP 811 Ridge Openings for Naturally Ventilated Dairy Shelters
- DIP 821 Cow Freestall (Cubicle), Types and Details
- DIP 831 Fenceline Feed Barriers
- DIP 851 Freestall Crossovers and Floor Surface Details

FOUR ROW TAIL TO TAIL FREESTALL SHELTER, DRIVE-THROUGH FEEDING, 248 STALLS - 4 GROUPS
Graves, McFarland, Tyson, Wilson
Date: 11/29/05 Sheet #3 of 3