

Notes :

- Structural details to be designed and constructed in accordance with local codes and conditions.
- Designed for maximum of 6 animals per pen for 30 sq. ft per head of bedded pack and 20" per head of feed space.
- Place floor to ceiling draft barriers every other pen in buildings longer than 30 ft.

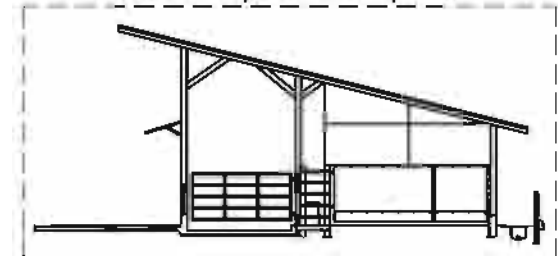
Related Detail Sheets :

- ① DIP 831 Fenceline Feed Barriers (Sheet #3)
- ② DIP 851 Freestall Crossovers and Floor Surface Details
- ③ DIP 842 Watering Locations for Calves & Heifers

**WEANED CALF SHELTER,
WEANED TO 300 POUNDS**
Tyson, Graves, McFarland, Wilson
Date: 02/06/07
Sheet #1 of 4

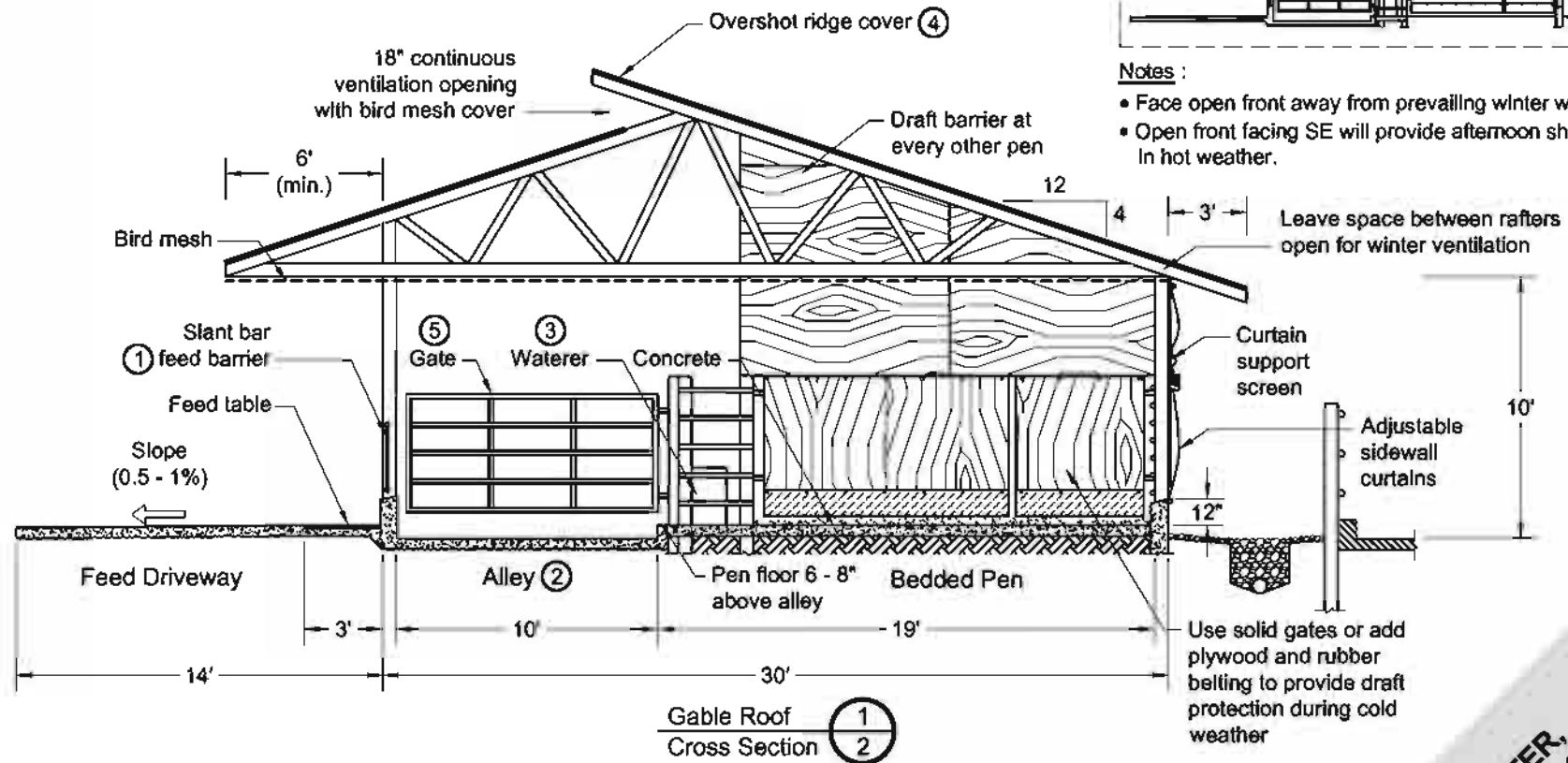


Monoslope Roof Option



Notes :

- Face open front away from prevailing winter winds.
- Open front facing SE will provide afternoon shading in hot weather.



Use solid gates or add plywood and rubber belting to provide draft protection during cold weather

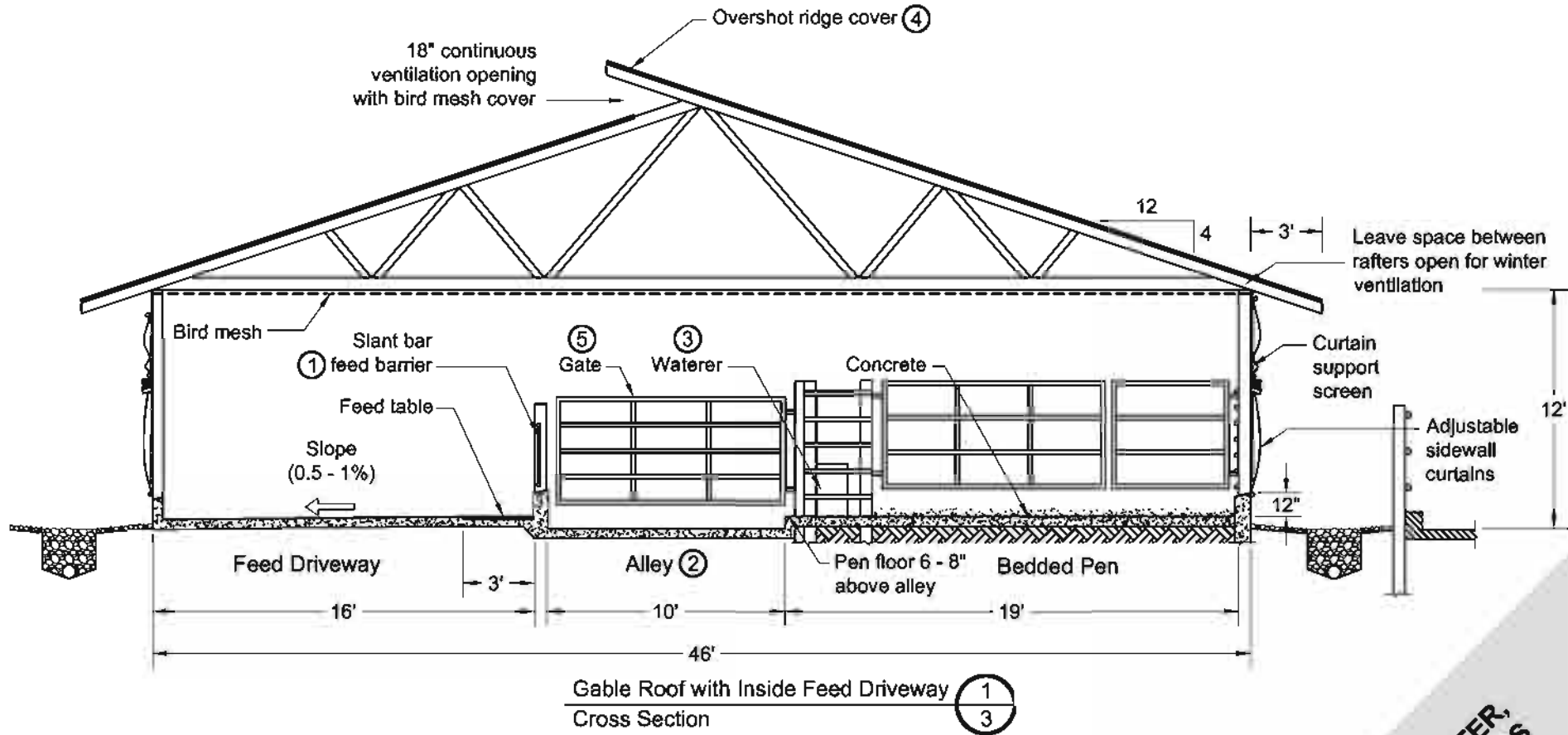
Notes :

- Structural details to be designed and constructed in accordance with local codes and conditions.
- Orient ridge perpendicular to prevailing winds.
- Face overshot ridge opening away from prevailing winds.
- Truss must be designed for overhang on one end.
- Roof overhang must clear feed equipment.
- Place floor to ceiling draft barriers every other pen in buildings longer than 30 ft.

Related Detail Sheets :

- ① DIP 831 Fenceline Feed Barriers (Sheet #3)
- ② DIP 851 Freestall Crossovers and Floor Surface Details
- ③ DIP 842 Watering Locations for Calves & Heifers
- ④ DIP 811 Ridge Openings for Naturally Ventilated Dairy Shelters
- ⑤ DIP 861 Gates and Penwork

**WEANED CALF SHELTER,
WEANED TO 300 POUNDS**
Tyson, Graves, McFarland, Wilson
Date: 02/06/07
Sheet #2 of 4



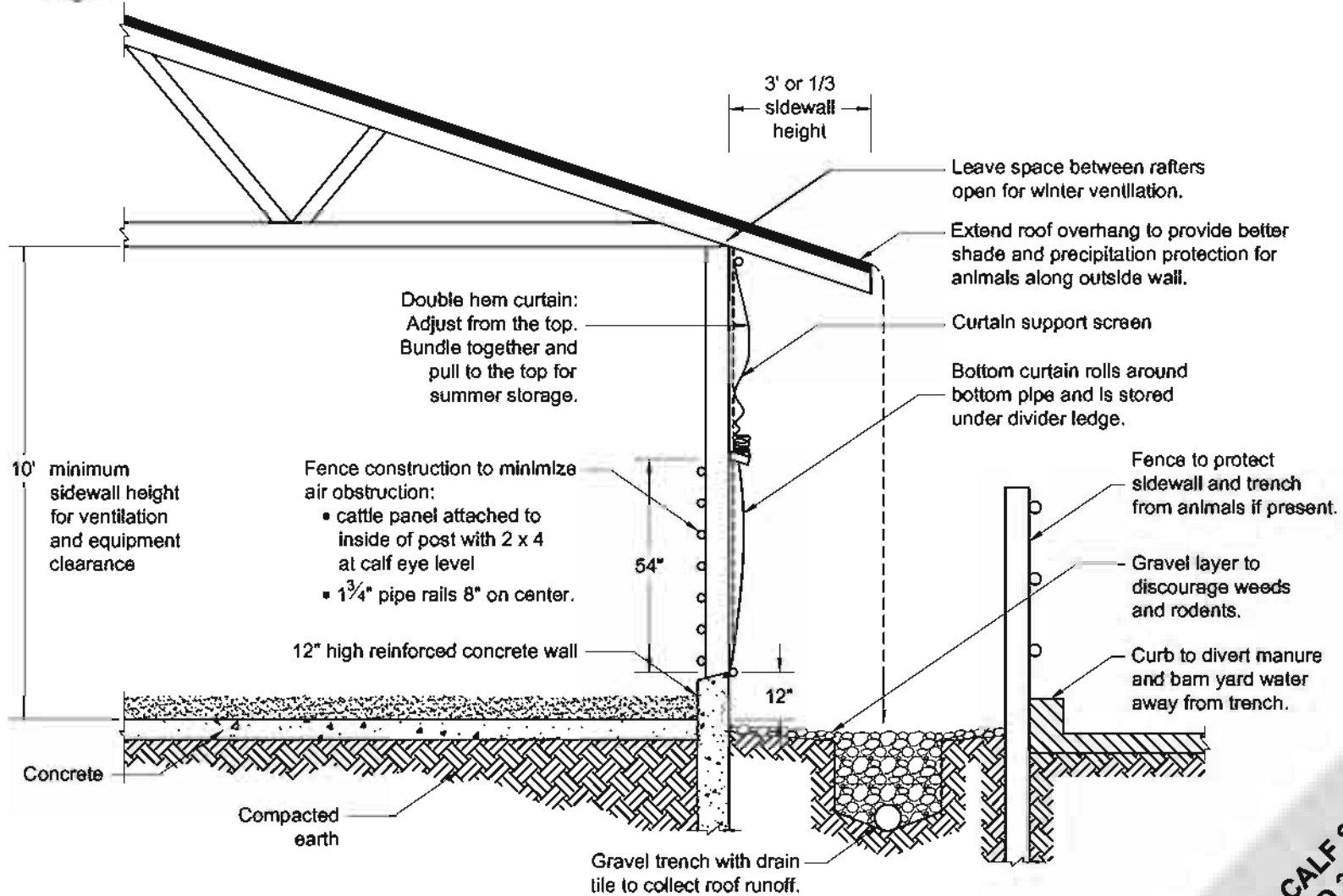
- Structural details to be designed and constructed in accordance with local codes and conditions.

- Place floor to ceiling draft barriers every other pen in buildings longer than 30 ft.

Related Detail Sheets :

- ① DIP 831 Fenceline Feed Barriers (Sheet #3)
- ② DIP 851 Freestall Crossovers and Floor Surface Details
- ③ DIP 842 Watering Locations for Calves & Heifers
- ④ DIP 811 Ridge Openings for Naturally Ventilated Dairy Shelters
- ⑤ DIP 861 Gates and Penwork

**WEANED CALF SHELTER,
WEANED TO 300 POUNDS**
Tyson, Graves, McFarland, Wilson
Date: 02/06/07
Sheet #3 of 4



Sidewall Details

2
1

Cross Section

**WEANED CALF SHELTER,
WEANED TO 300 POUNDS**
Tyson, Graves, McFarland, Wilson
Date: 02/06/07
Sheet #4 of 4