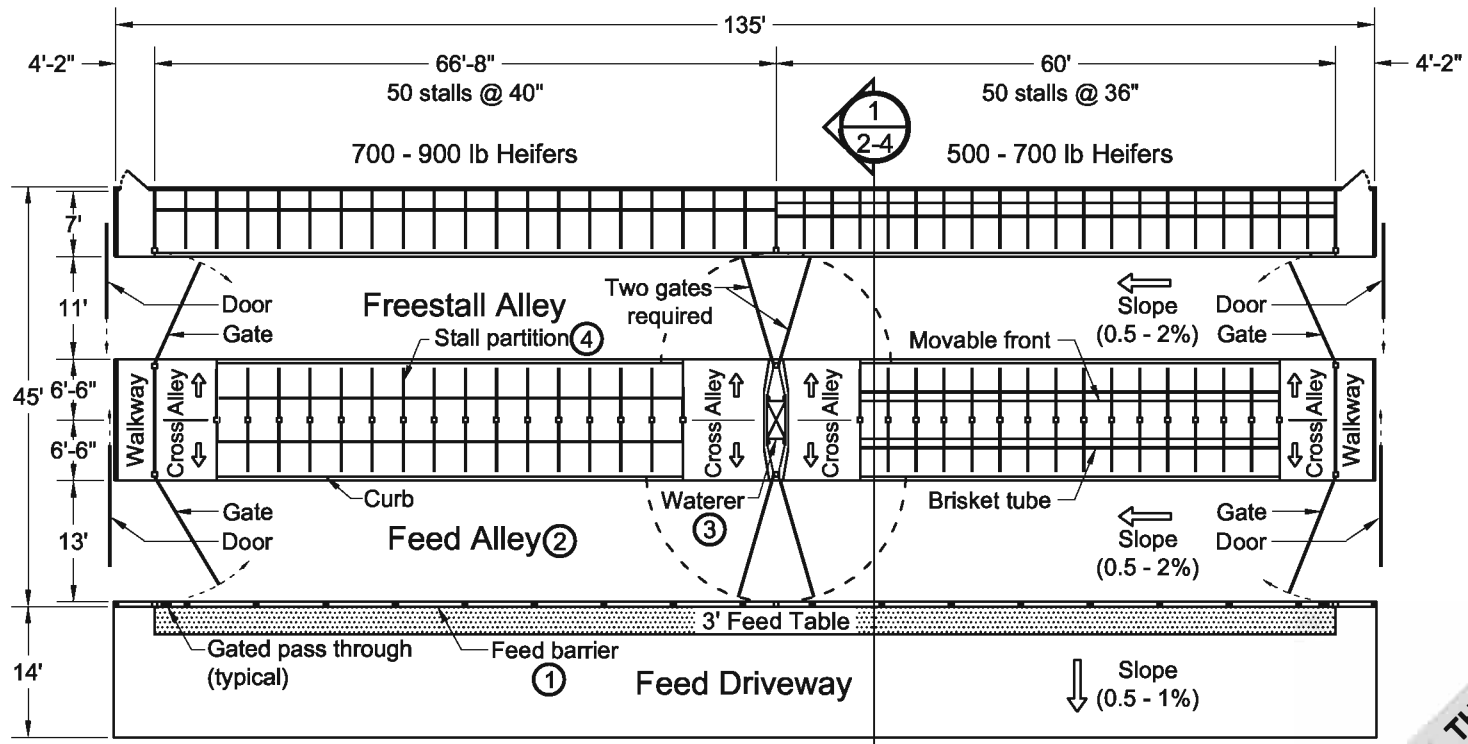
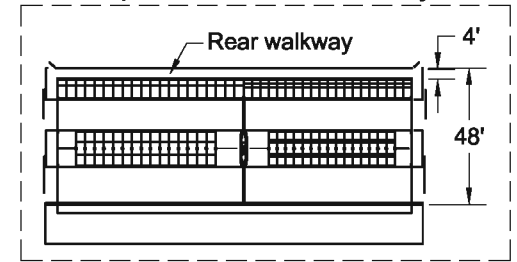


Optional Rear Walkway



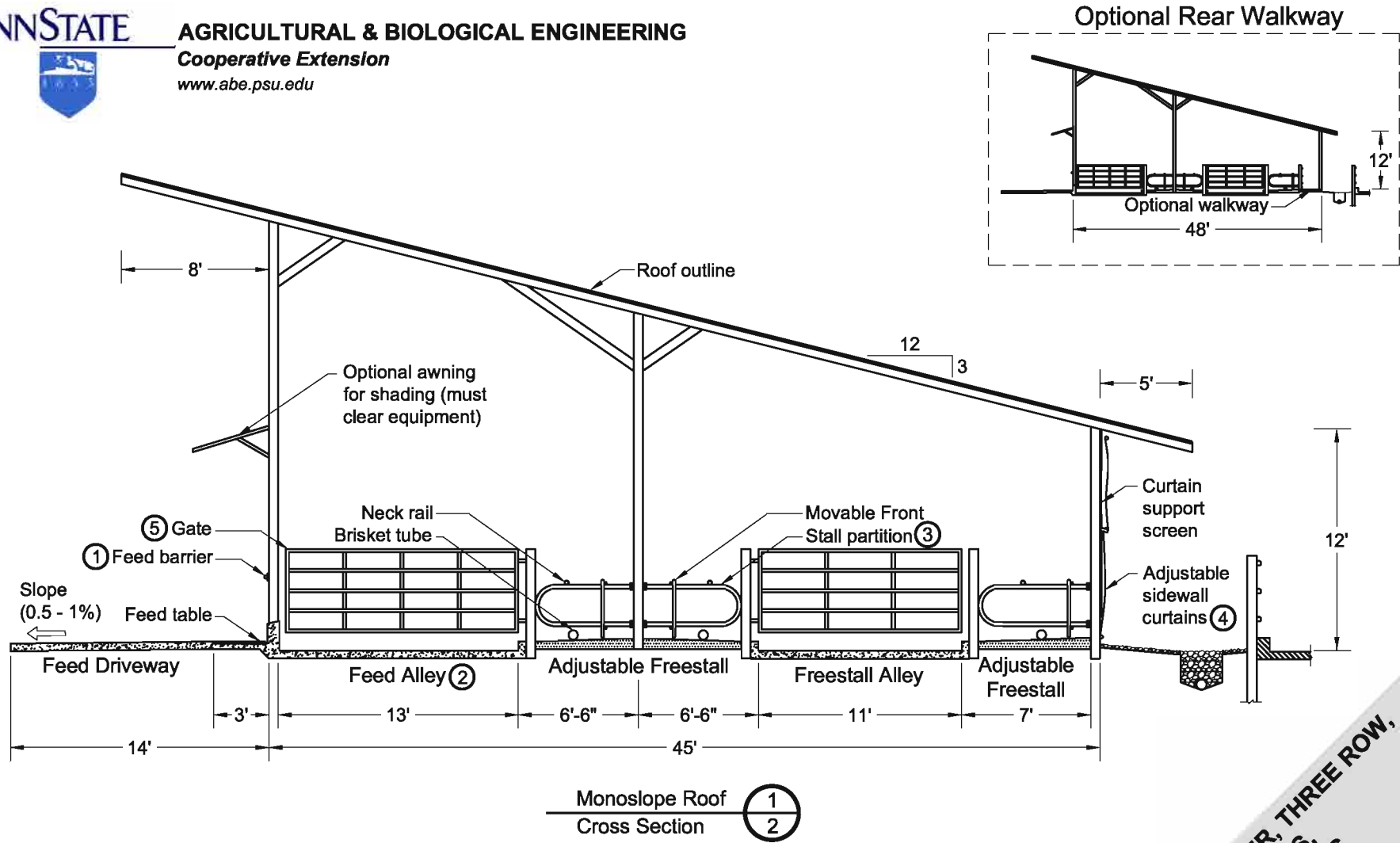
Notes :

- Structural details to be designed and constructed in accordance with local codes and conditions.
- Provide a gated worker pass through in each group for easy access.
- Plan shows 2 groups of 35 stalls. Can be expanded using same ideas shown.
- Building length may vary depending on stall width and number.

Related Detail Sheets :

- ① DIP 831 Fenceline Feed Barriers
- ② DIP 851 Freestall Crossovers and Floor Surface Details
- ③ DIP 842 Watering Locations for Dairy Heifer
- ④ DIP 822 Heifer Freestall (Cubicle), Types and Details

**HEIFER FREESTALL SHELTER, THREE ROW,
 500 TO 900 POUNDS,
 2 GROUPS, 100 STALLS**
 Graves, McFarland, Tyson, Wilson
 Date: 02/24/07 Sheet #1 of 4



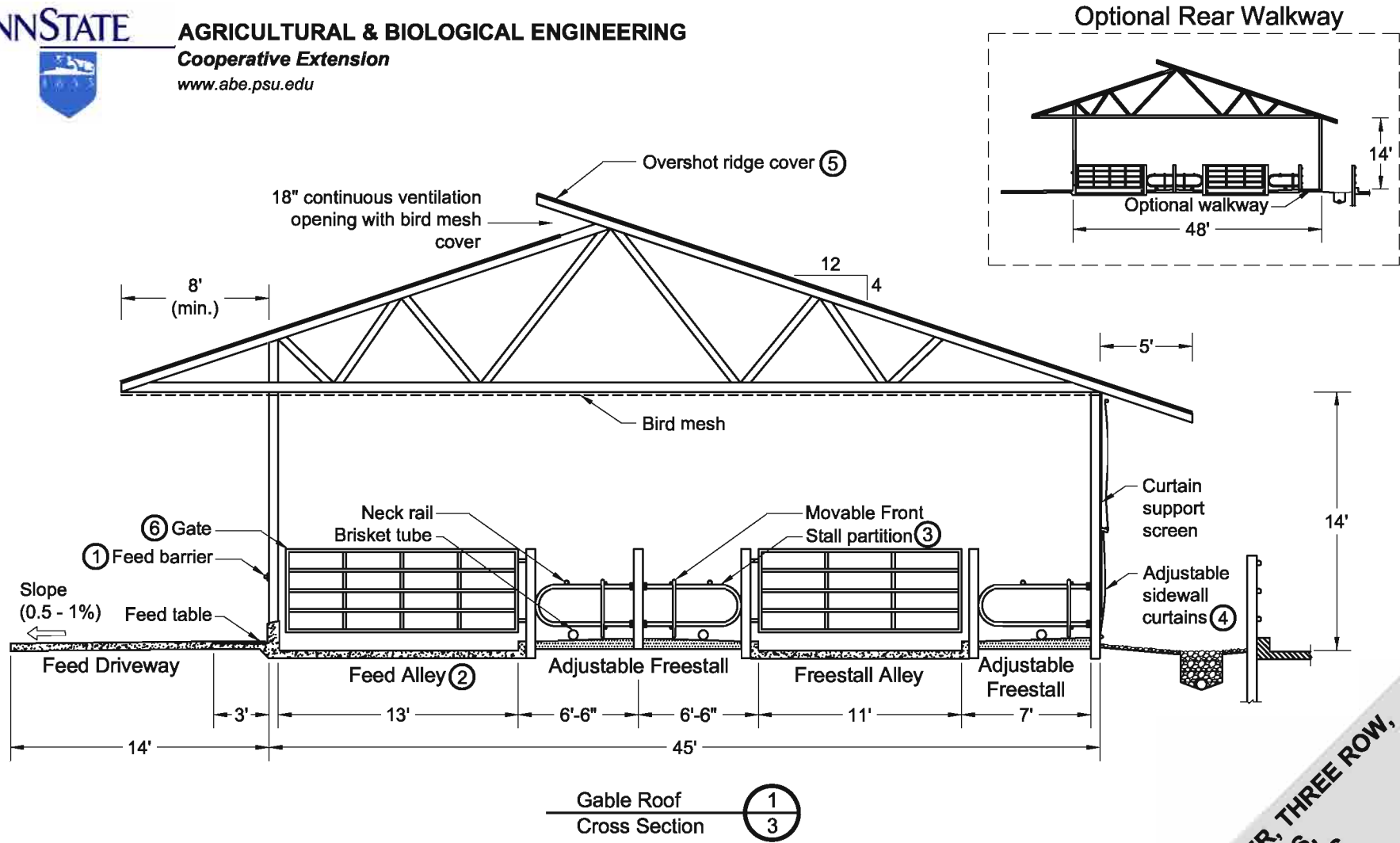
Notes :

- Structural details to be designed and constructed in accordance with local codes and conditions.
- Face open front away from prevailing winter winds.
- Open front facing SE will provide afternoon shading in hot weather.

Related Detail Sheets :

- ① DIP 831 Fenceline Feed Barriers
- ② DIP 851 Freestall Crossovers and Floor Surface Details
- ③ DIP 822 Heifer Freestall (Cubicle), Types and Details
- ④ DIP 802 Typical Sidewall - Freestall Row
- ⑤ DIP 861 Gates and Penwork

**HEIFER FREESTALL SHELTER, THREE ROW,
 500 TO 900 POUNDS,
 2 GROUPS, 100 STALLS**
 Graves, McFarland, Tyson, Wilson
 Date: 02/24/07 Sheet #2 of 4



Notes :

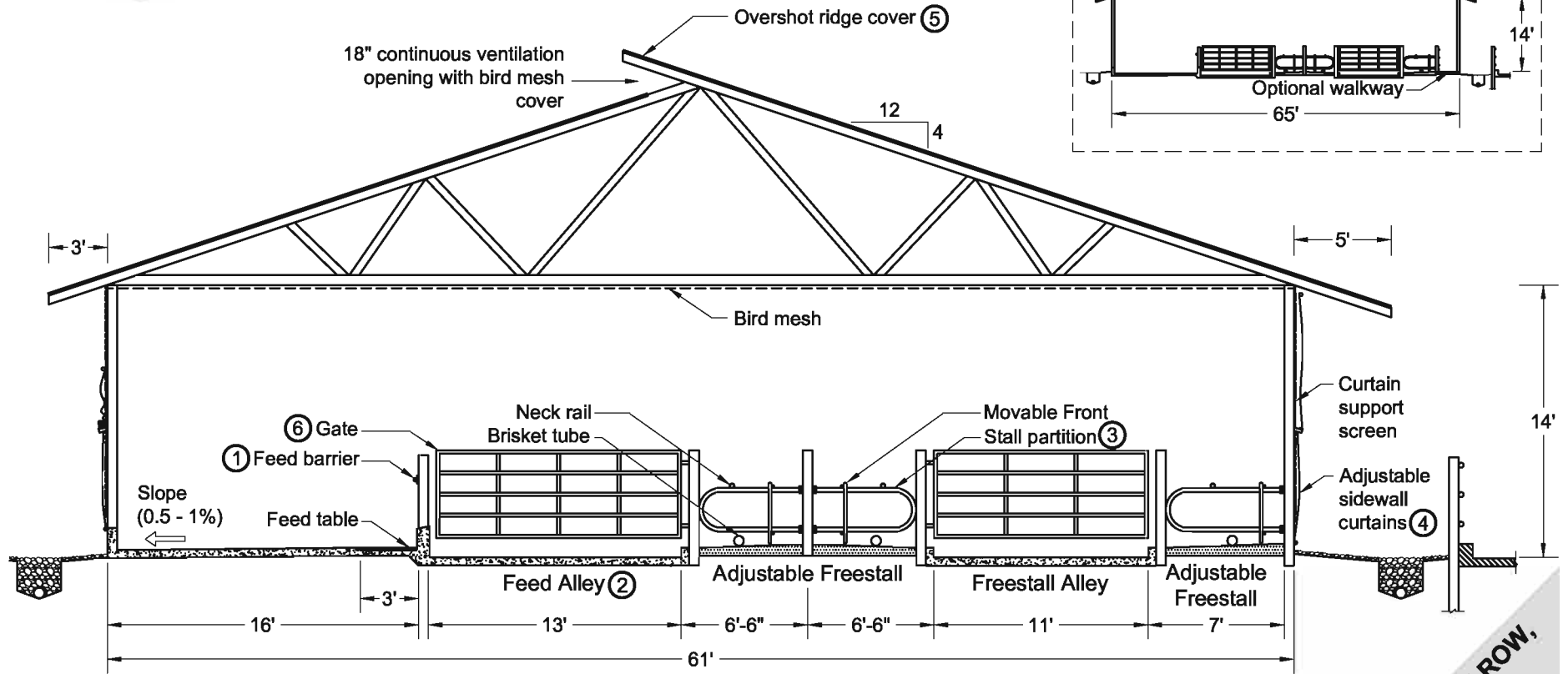
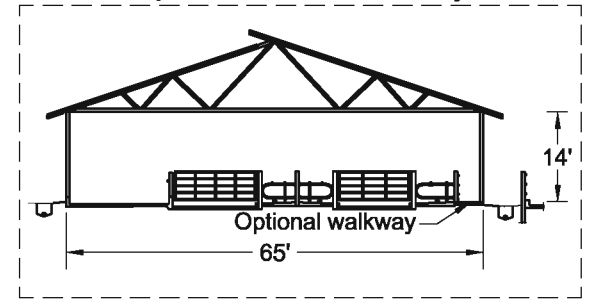
- Structural details to be designed and constructed in accordance with local codes and conditions.
- Orient overshoot ridge perpendicular to prevailing winds.
- Truss must be designed for overhang on one end.
- Roof overhang must clear feed equipment.

Related Detail Sheets :

- ① DIP 831 Fenceline Feed Barriers
- ② DIP 851 Freestall Crossovers and Floor Surface Details
- ③ DIP 822 Heifer Freestall (Cubicle), Types and Details
- ④ DIP 802 Typical Sidewall - Freestall Row
- ⑤ DIP 811 Ridge Openings for Naturally Ventilated Dairy Shelters
- ⑥ DIP 861 Gates and Penwork

**HEIFER FREESTALL SHELTER, THREE ROW,
 500 TO 900 POUNDS,
 2 GROUPS, 100 STALLS**
 Graves, McFarland, Tyson, Wilson
 Date: 02/24/07 Sheet #3 of 4

Optional Rear Walkway



Gable Roof
 Cross Section, Inside Feeding

Notes :

- Structural details to be designed and constructed in accordance with local codes and conditions.
- Orient overshoot ridge perpendicular to prevailing winds.
- Roof ceiling must clear feed equipment.

Related Detail Sheets :

- ① DIP 831 Fenceline Feed Barriers
- ② DIP 851 Freestall Crossovers and Floor Surface Details
- ③ DIP 822 Heifer Freestall (Cubicle), Types and Details
- ④ DIP 802 Typical Sidewall - Freestall Row
- ⑤ DIP 811 Ridge Openings for Naturally Ventilated Dairy Shelters
- ⑥ DIP 861 Gates and Penwork

**HEIFER FREESTALL SHELTER, THREE ROW,
 500 TO 900 POUNDS,
 2 GROUPS, 100 STALLS**
 Graves, McFarland, Tyson, Wilson
 Date: 02/24/07 Sheet #4 of 4