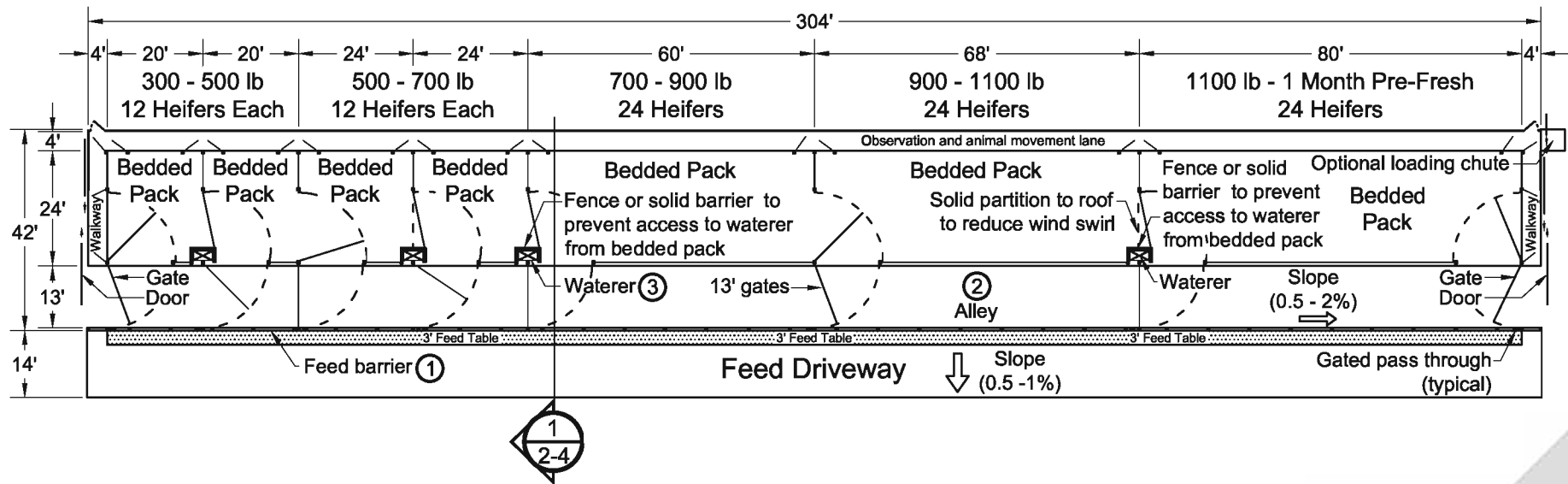
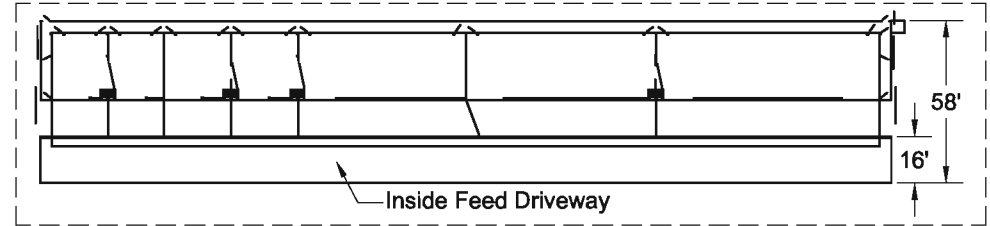




Inside Feed Driveway Option



Notes :

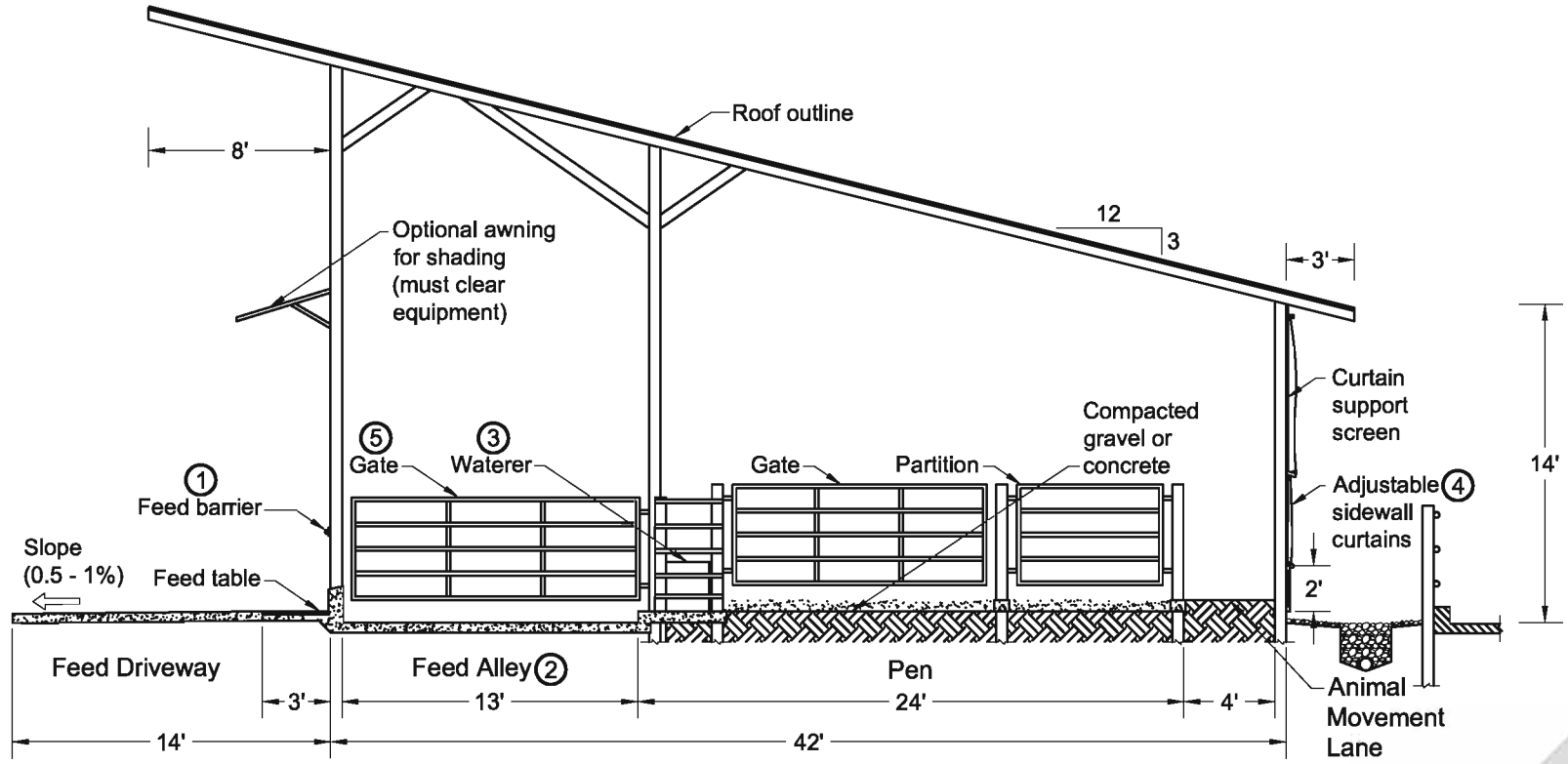
- Structural details to be designed and constructed in accordance with local codes and conditions.
- Put plywood on gates if drafts are a problem with younger animals.
- Provide bedded pack area per heifer as follows:

- 300 - 500 lb:	40 sq. ft.
- 500 - 700 lb:	50 sq. ft.
- 700 - 900 lb:	60 sq. ft.
- 900 - 1100 lb:	70 sq. ft.
- 1100 lb - Pre-fresh:	80 sq. ft.

Related Detail Sheets :

- ① DIP 831 Fenceline Feed Barriers
- ② DIP 851 Freestall Crossovers and Floor Surface Details
- ③ DIP 842 Watering Locations for Dairy Calves and Heifers

BEDDED PACK HEIFER SHELTER, 300 POUNDS TO 1 MONTH PRE-FRESH, 7 GROUPS, 120 ANIMALS - FITS TWO ROW HEIFER FREESTALL
 Graves, McFarland, Tyson, Wilson
 Date: 02/03/07
 Sheet #1 of 4



Monoslope Roof 1
 Cross Section 2

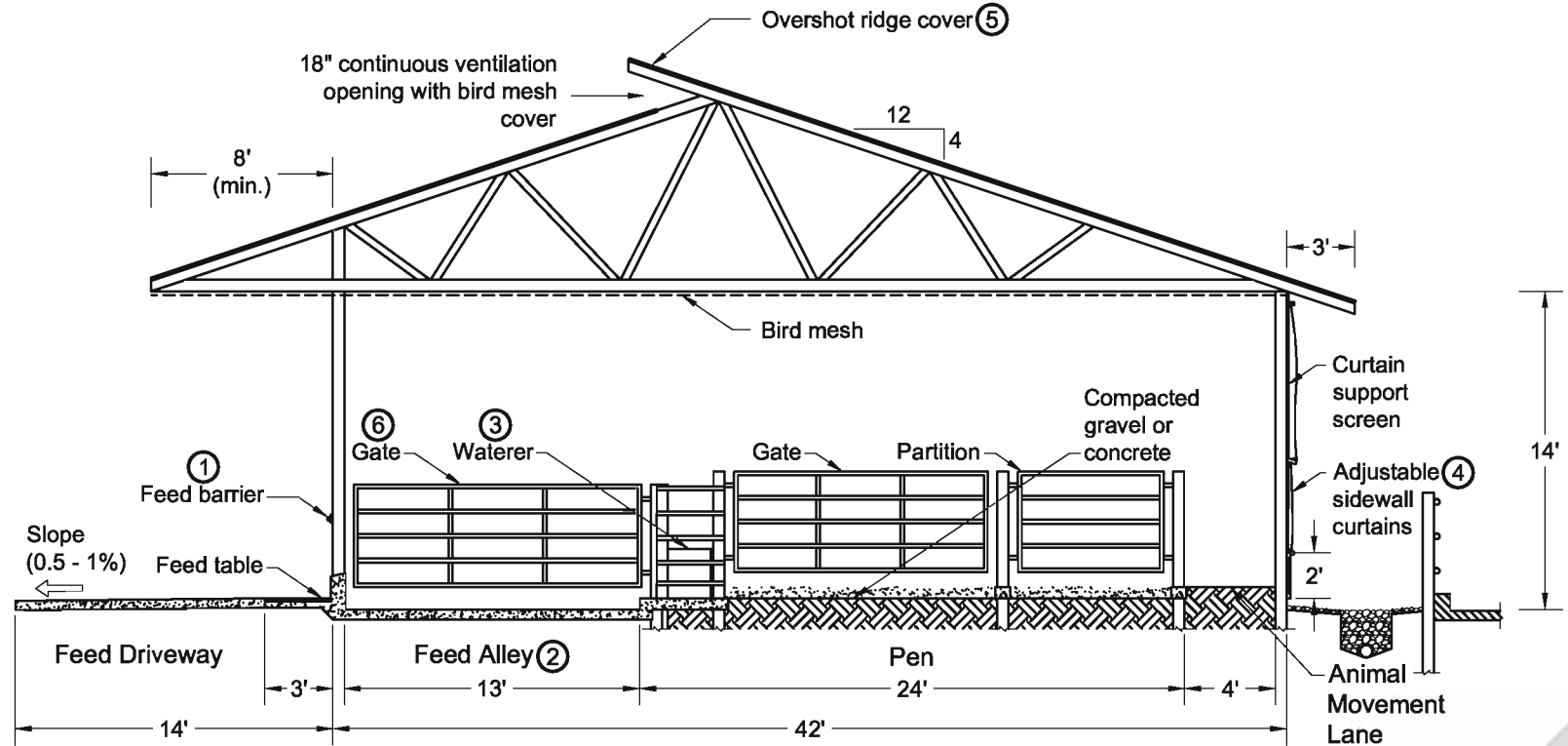
Notes :

- Structural details to be designed and constructed in accordance with local codes and conditions.
- Face open front away from prevailing winter winds.
- Open front facing SE will provide afternoon shading in hot weather.

Related Detail Sheets :

- ① DIP 831 Fenceline Feed Barriers
- ② DIP 851 Freestall Crossovers and Floor Surface Details
- ③ DIP 842 Watering Locations for Dairy Calves and Heifers
- ④ DIP 801 Typical Sidewall - Outside Alley
- ⑤ DIP 861 Gates and Penwork

BEDDED PACK HEIFER SHELTER, 300 POUNDS TO 1 MONTH PRE-FRESH, 7 GROUPS, 120 ANIMALS - FITS TWO ROW HEIFER FREESTALL
 Graves, McFarland, Tyson, Wilson
 Date: 02/03/07
 Sheet #2 of 4



Gable Roof 1
 Cross Section 3

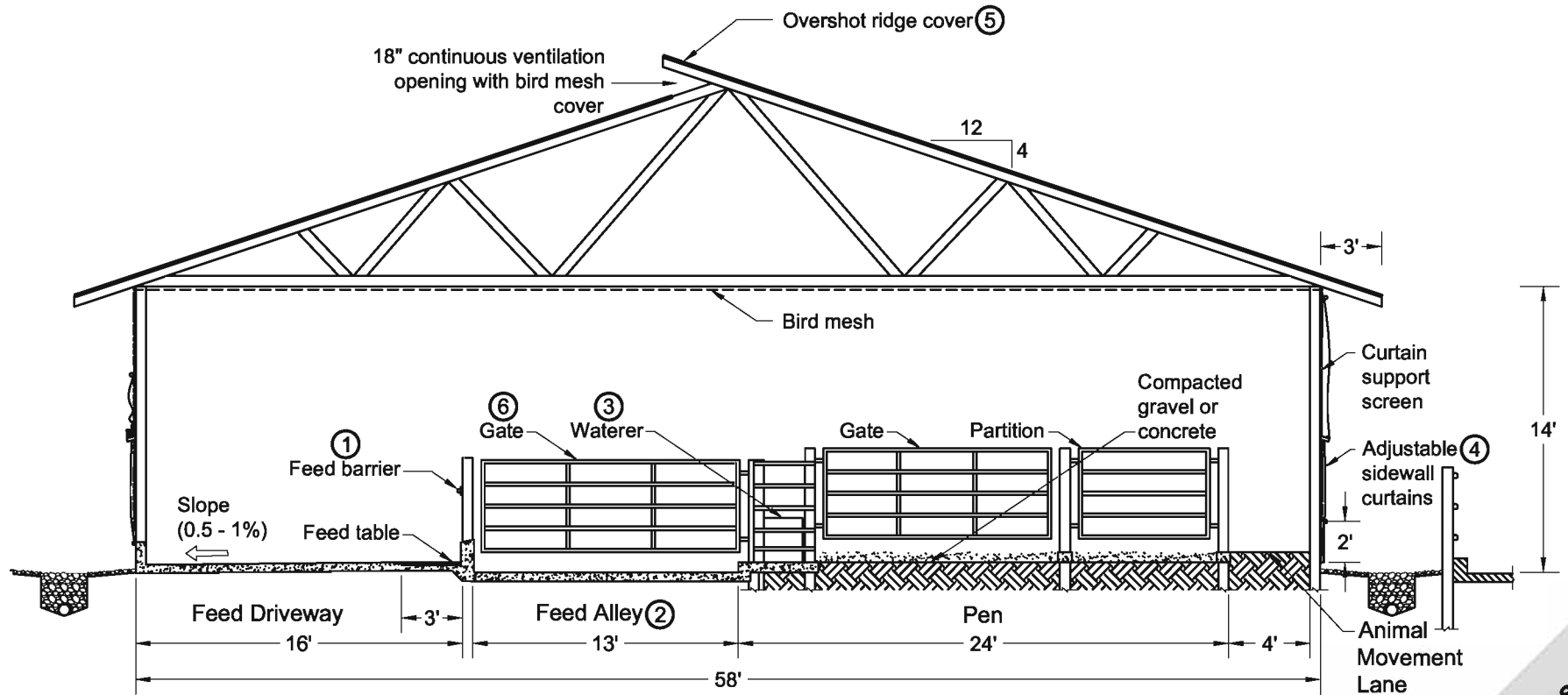
Notes :

- Structural details to be designed and constructed in accordance with local codes and conditions.
- Orient overshoot ridge perpendicular to prevailing winds.
- Truss must be designed for overhang on one end.
- Roof overhang must clear feed equipment.

Related Detail Sheets :

- ① DIP 831 Fenceline Feed Barriers
- ② DIP 851 Freestall Crossovers and Floor Surface Details
- ③ DIP 842 Watering Locations for Dairy Calves and Heifers
- ④ DIP 801 Typical Sidewall - Outside Alley
- ⑤ DIP 811 Ridge Openings for Naturally Ventilated Dairy Shelters
- ⑥ DIP 861 Gates and Penwork

BEDDED PACK HEIFER SHELTER, 300 POUNDS TO 1 MONTH PRE-FRESH, 7 GROUPS, 120 ANIMALS - FITS TWO ROW HEIFER FREESTALL
 Graves, McFarland, Tyson, Wilson
 Date: 02/03/07
 Sheet #3 of 4



Gable Roof
Cross Section, Inside Feeding 1
4

Notes :

- Structural details to be designed and constructed in accordance with local codes and conditions.
- Orient overshoot ridge perpendicular to prevailing winds.
- Ceiling height must clear feed equipment.

Related Detail Sheets :

- ① DIP 831 Fenceline Feed Barriers
- ② DIP 851 Freestall Crossovers and Floor Surface Details
- ③ DIP 842 Watering Locations for Dairy Calves and Heifers
- ④ DIP 801 Typical Sidewall - Outside Alley
- ⑤ DIP 811 Ridge Openings for Naturally Ventilated Dairy Shelters
- ⑥ DIP 861 Gates and Penwork

BEDDED PACK HEIFER SHELTER, 300 POUNDS TO 1 MONTH PRE-FRESH, 7 GROUPS, 120 ANIMALS - FITS TWO ROW HEIFER FREESTALL
 Graves, McFarland, Tyson, Wilson
 Date: 02/03/07 Sheet #4 of 4