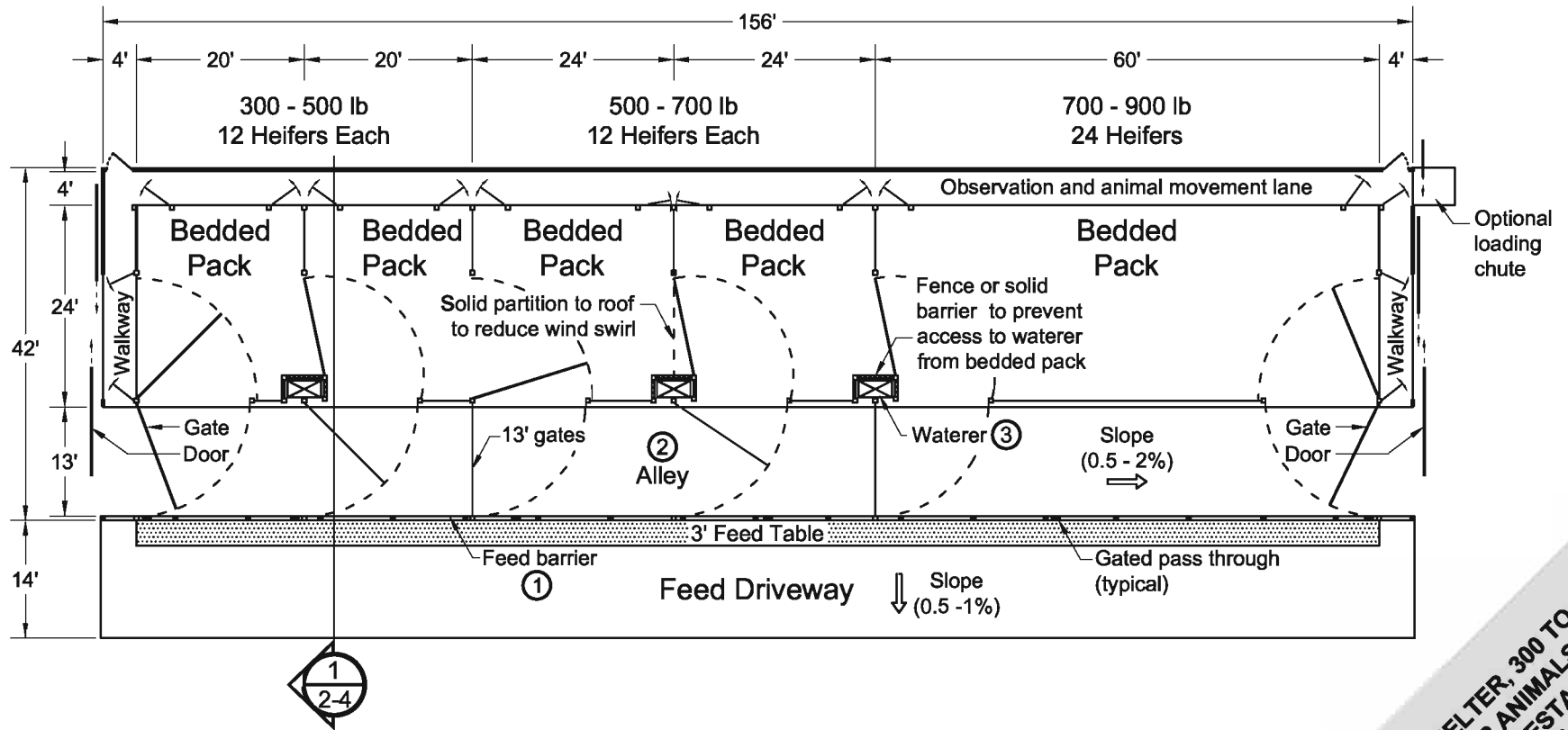
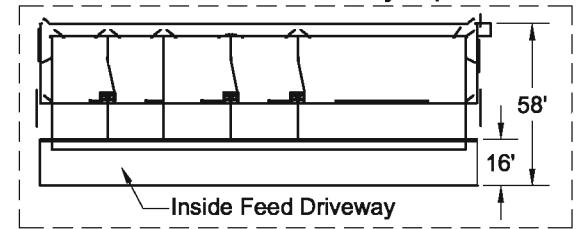


Inside Feed Driveway Option



**Notes :**

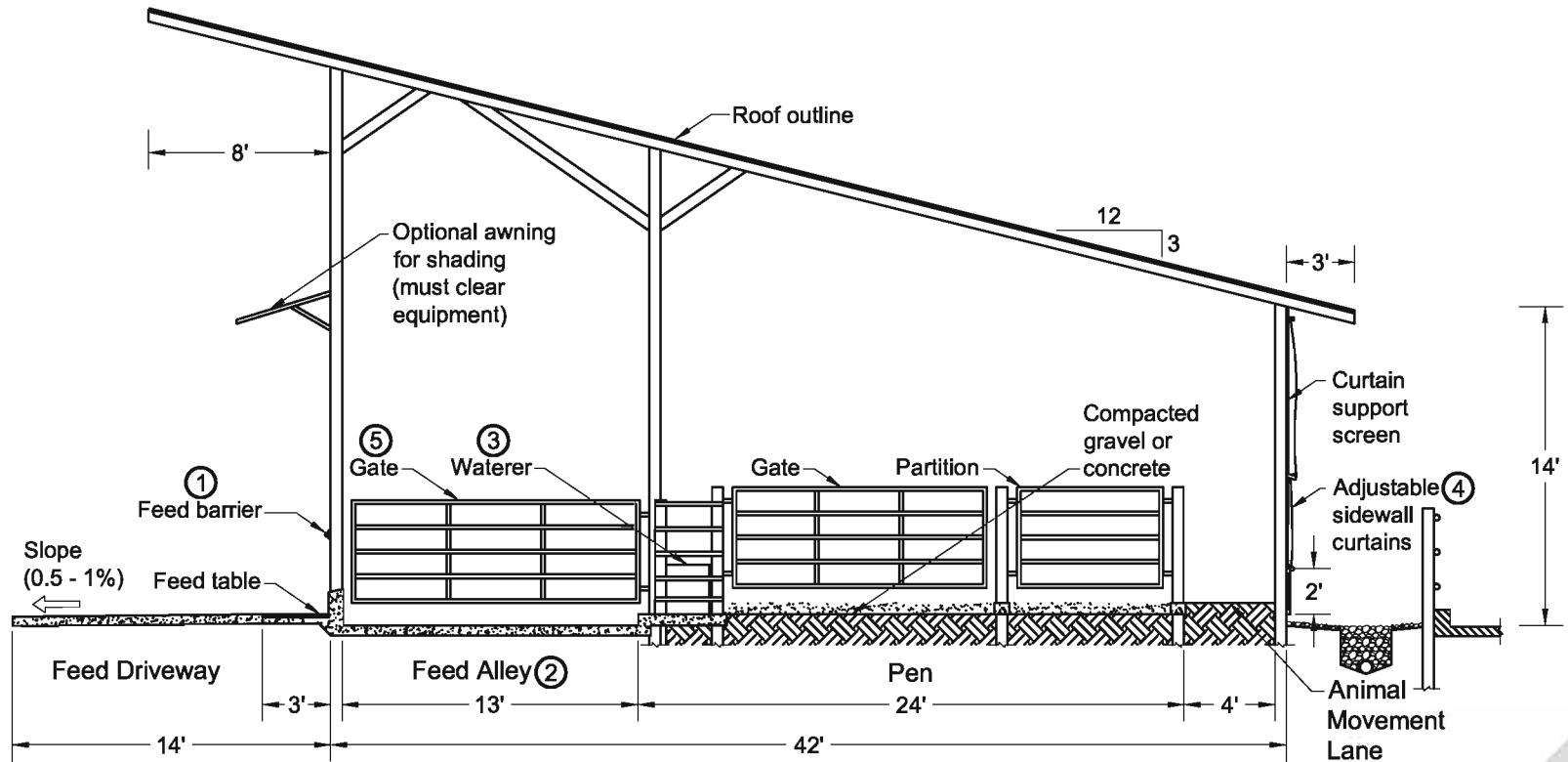
- Structural details to be designed and constructed in accordance with local codes and conditions.
- Put plywood on gates if drafts are a problem with younger animals.
- Provide bedded pack area per heifer as follows:
 

- 300 - 500 lb:	40 sq. ft.
- 500 - 700 lb:	50 sq. ft.
- 700 - 900 lb:	60 sq. ft.
- 900 - 1100 lb:	70 sq. ft.
- 1100 lb - Pre-fresh:	80 sq. ft.

**Related Detail Sheets :**

- ① DIP 831 Fenceline Feed Barriers
- ② DIP 851 Freestall Crossovers and Floor Surface Details
- ③ DIP 842 Watering Locations for Dairy Calves and Heifers

**BEDDED PACK HEIFER SHELTER, 300 TO 900 POUNDS, 5 GROUPS, 72 ANIMALS - FITS TWO ROW HEIFER FREESTALL**  
 Graves, McFarland, Tyson, Wilson  
 Date: 01/13/07  
 Sheet #1 of 4



Monoslope Roof 1  
 Cross Section 2

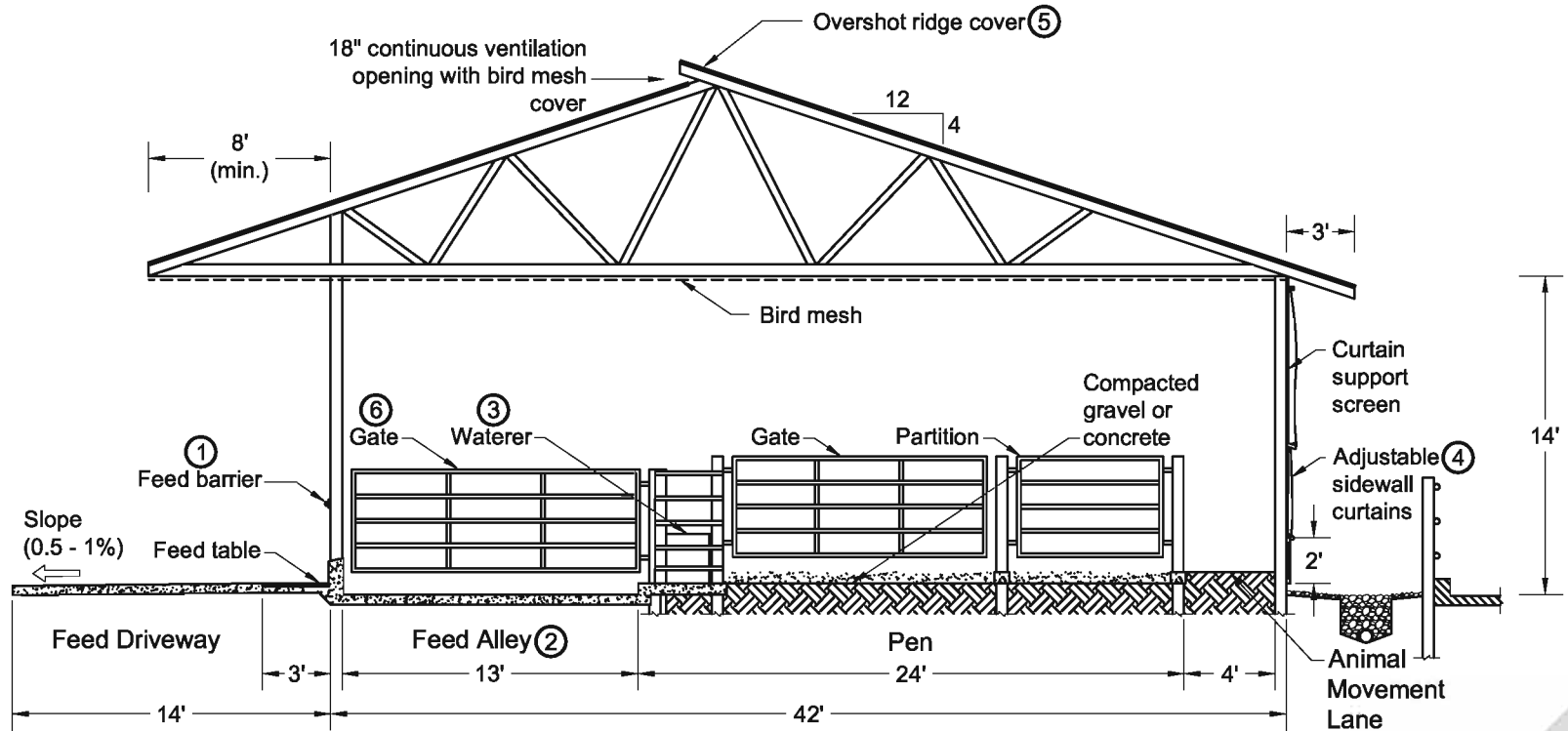
**Notes :**

- Structural details to be designed and constructed in accordance with local codes and conditions.
- Face open front away from prevailing winter winds.
- Open front facing SE will provide afternoon shading in hot weather.

**Related Detail Sheets :**

- ① DIP 831 Fenceline Feed Barriers
- ② DIP 851 Freestall Crossovers and Floor Surface Details
- ③ DIP 842 Watering Locations for Dairy Calves and Heifers
- ④ DIP 801 Typical Sidewall - Outside Alley
- ⑤ DIP 861 Gates and Penwork

**BEDDED PACK HEIFER SHELTER, 300 TO 900 POUNDS, 5 GROUPS, 72 ANIMALS - FITS TWO ROW HEIFER FREESTALL**  
 Graves, McFarland, Tyson, Wilson  
 Date: 01/13/07  
 Sheet #2 of 4



Gable Roof 1  
 Cross Section 3

**Notes :**

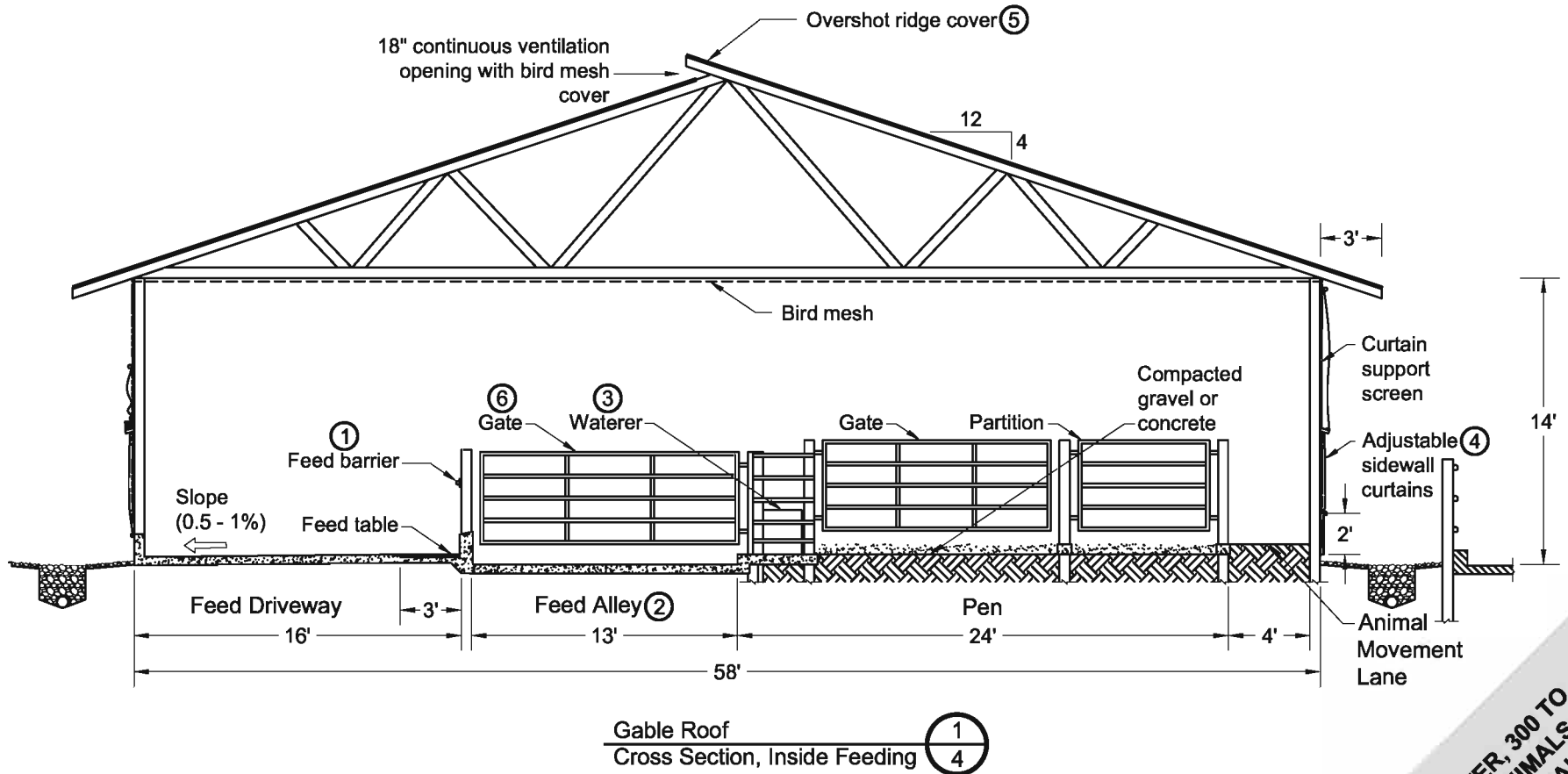
- Structural details to be designed and constructed in accordance with local codes and conditions.
- Orient overshot ridge perpendicular to prevailing winds.
- Truss must be designed for overhang on one end.
- Roof overhang must clear feed equipment.

**Related Detail Sheets :**

- ① DIP 831 Fenceline Feed Barriers
- ② DIP 851 Freestall Crossovers and Floor Surface Details
- ③ DIP 842 Watering Locations for Dairy Calves and Heifers
- ④ DIP 801 Typical Sidewall - Outside Alley
- ⑤ DIP 811 Ridge Openings for Naturally Ventilated Dairy Shelters
- ⑥ DIP 861 Gates and Penwork

**BEDDED PACK HEIFER SHELTER, 300 TO 900 POUNDS, 5 GROUPS, 72 ANIMALS**  
 - FITS TWO ROW HEIFER FREESTALL  
 Graves, McFarland, Tyson, Wilson  
 Date: 01/13/107 Sheet #3 of 4

**No. DIP 533**



**Notes :**

- Structural details to be designed and constructed in accordance with local codes and conditions.
- Orient overshoot ridge perpendicular to prevailing winds.
- Ceiling height must clear feed equipment.

**Related Detail Sheets :**

- ① DIP 831 Fenceline Feed Barriers
- ② DIP 851 Freestall Crossovers and Floor Surface Details
- ③ DIP 842 Watering Locations for Dairy Calves and Heifers
- ④ DIP 801 Typical Sidewall - Outside Alley
- ⑤ DIP 811 Ridge Openings for Naturally Ventilated Dairy Shelters
- ⑥ DIP 861 Gates and Penwork

**BEDDED PACK HEIFER SHELTER, 300 TO 900 POUNDS, 5 GROUPS, 72 ANIMALS**  
 - FITS TWO ROW HEIFER FREESTALL  
 Graves, McFarland, Tyson, Wilson  
 Date: 01/13/07 Sheet #4 of 4

**No. DIP 533**