

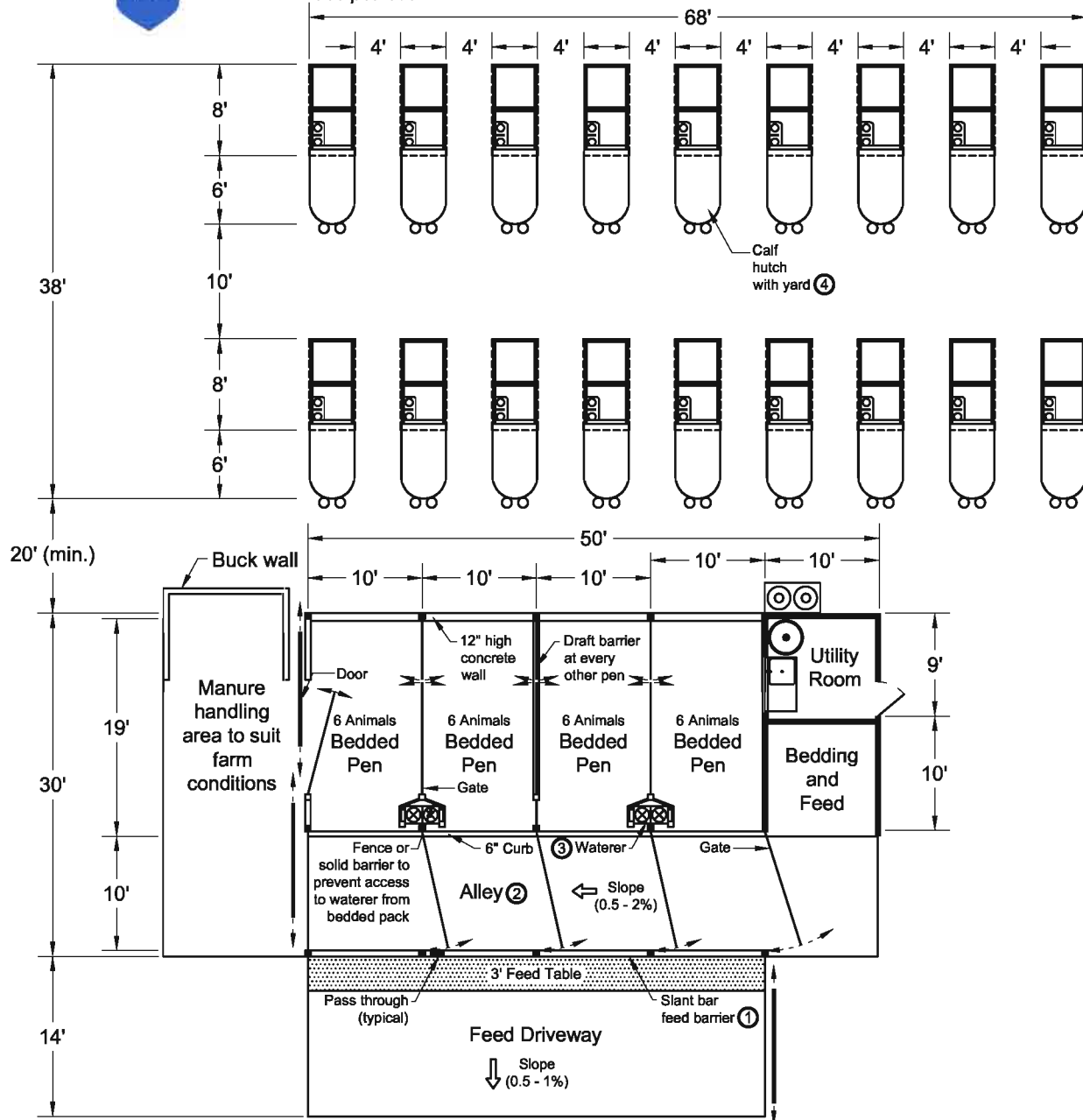
Notes :

- Structural details to be designed and constructed in accordance with local codes and conditions.
- Designed for maximum of 6 animals per pen for 30 sq. ft per head of bedded pack and 20" per head of feed space.
- Place floor to ceiling draft barriers every other pen in buildings longer than 30 ft.

Related Plans :

- ① DIP 831 Fenceline Feed Barriers
- ② DIP 851 Freestall Crossovers and Floor Surface Details
- ③ DIP 842 Watering Locations for Dairy Calves and Heifers
- ④ DIP 501 Calf Hutch with Yard

CALF HUTCHES, WEANED CALF SHELTER AND UTILITY ROOM, 18 INDIVIDUAL HUTCHES, 42 ANIMALS
 Graves, Tyson, McFarland, Wilson
 Date: 02/16/07 Sheet #1 of 5
No. DIP 525



Notes :

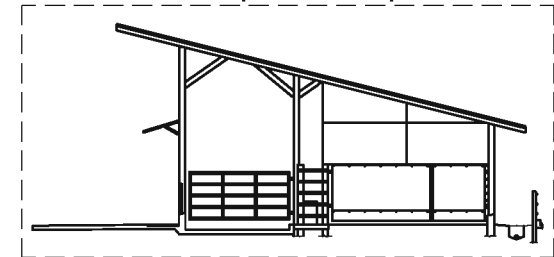
- Structural details to be designed and constructed in accordance with local codes and conditions.
- Designed for maximum of 6 animals per pen for 30 sq. ft per head of bedded pack and 20" per head of feed space.
- Place floor to ceiling draft barriers every other pen in buildings longer than 30 ft.

Related Detail Plans :

- ① DIP 831 Fenceline Feed Barriers
- ② DIP 851 Freestall Crossovers and Floor Surface Details
- ③ DIP 842 Watering Locations for Dairy Calves and Heifers
- ④ DIP 501 Calf Hutch with Yard

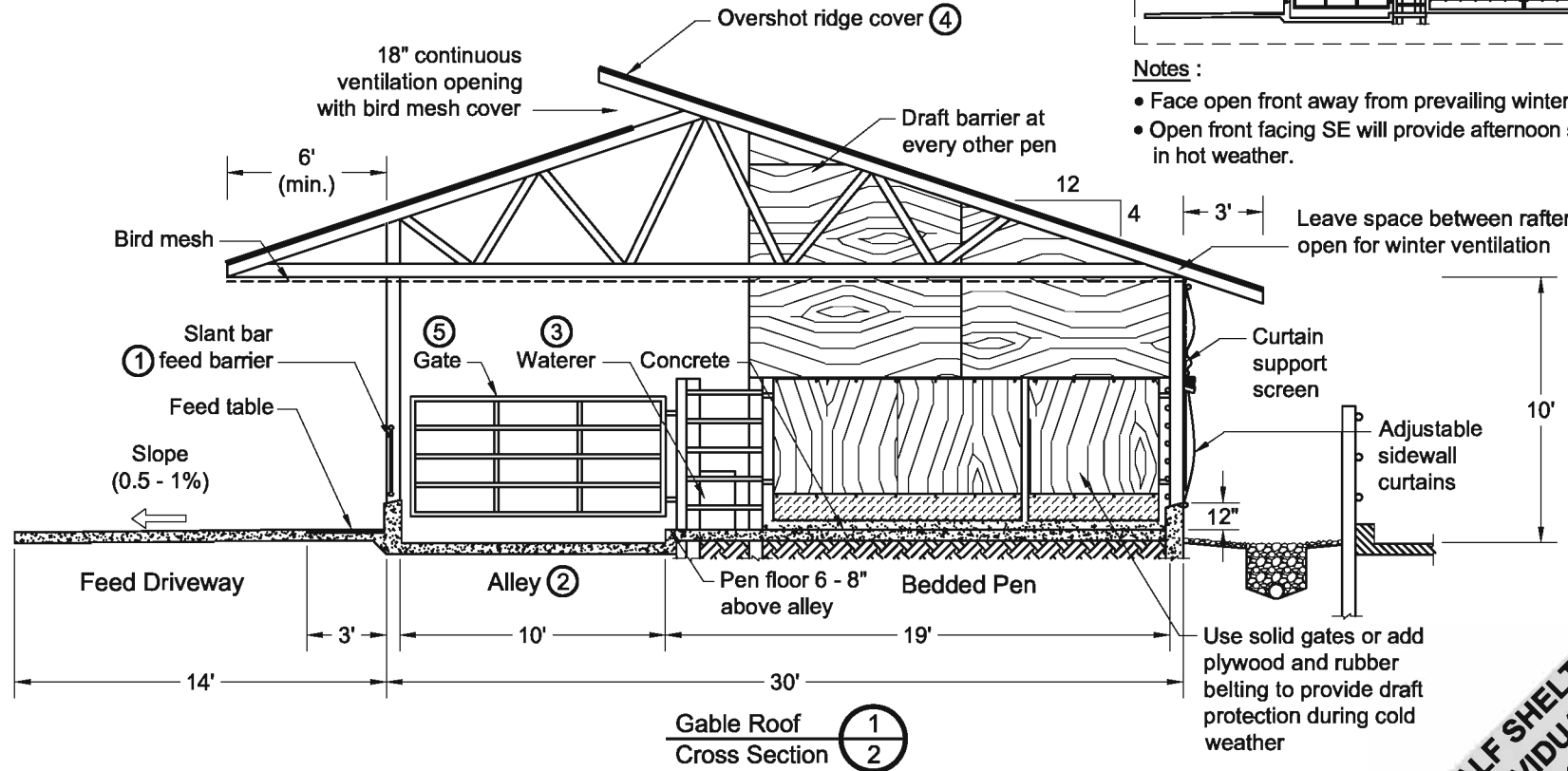
CALF HUTCHES, WEANED CALF SHELTER AND UTILITY ROOM, 18 INDIVIDUAL HUTCHES, 42 ANIMALS
 Graves, Tyson, McFarland, Wilson
 Date: 02/16/07 Sheet #2 of 5
No. DIP 525

Monoslope Roof Option



Notes :

- Face open front away from prevailing winter winds.
- Open front facing SE will provide afternoon shading in hot weather.



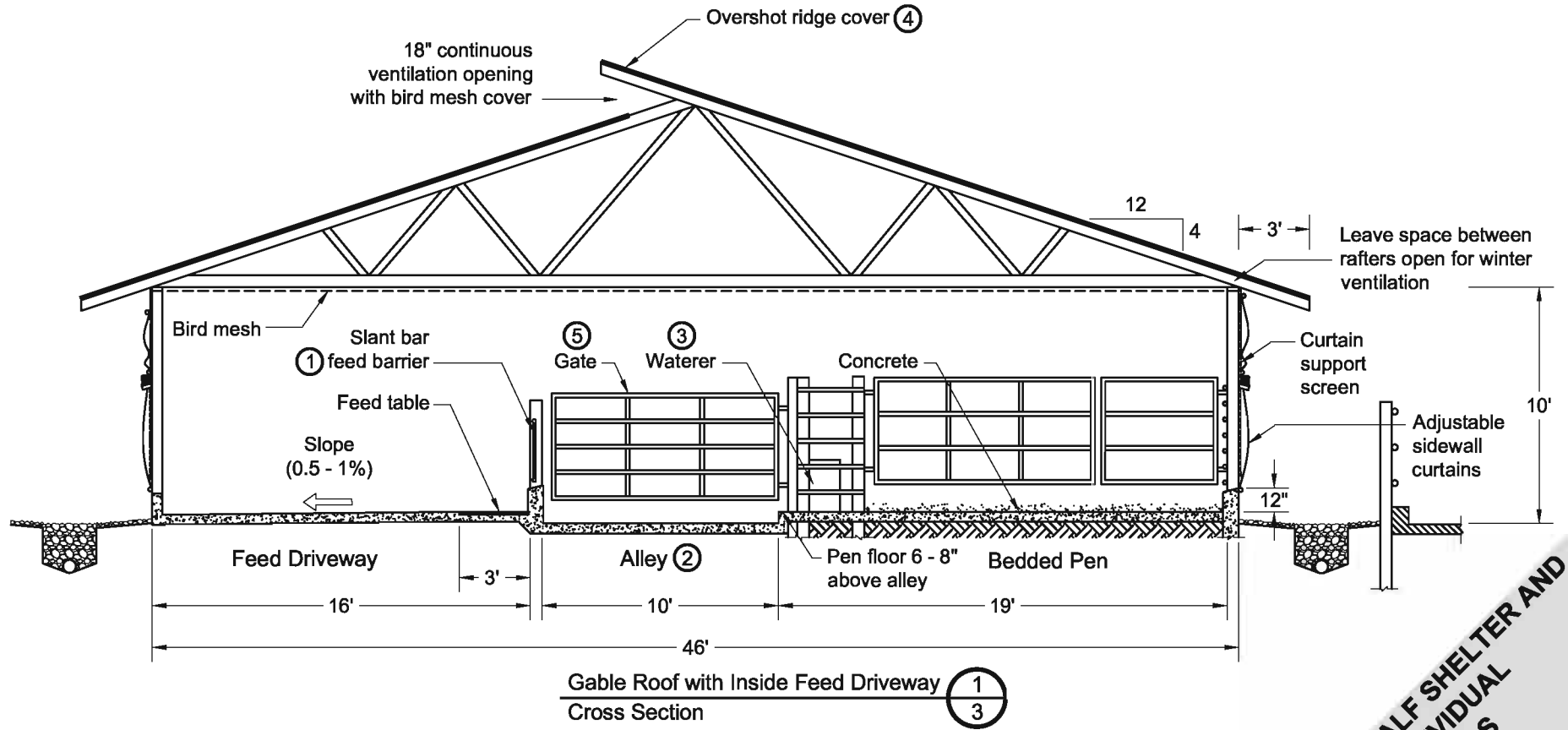
Notes :

- Structural details to be designed and constructed in accordance with local codes and conditions.
- Orient ridge perpendicular to prevailing winds.
- Face overshoot ridge opening away from prevailing winds.
- Truss must be designed for overhang on one end.
- Roof overhang must clear feed equipment.
- Place floor to ceiling draft barriers every other pen in buildings longer than 30 ft.

Related Detail Plans :

- ① DIP 831 Fenceline Feed Barriers (Sheet #3)
- ② DIP 851 Freestall Crossovers and Floor Surface Details
- ③ DIP 842 Watering Locations for Calves & Heifers
- ④ DIP 811 Ridge Openings for Naturally Ventilated Dairy Shelters
- ⑤ DIP 861 Gates and Penwork

CALF HUTCHES, WEANED CALF SHELTER AND UTILITY ROOM, 18 INDIVIDUAL HUTCHES, 42 ANIMALS
 Graves, Tyson, McFarland, Wilson
 Date: 02/16/07 Sheet #3 of 5



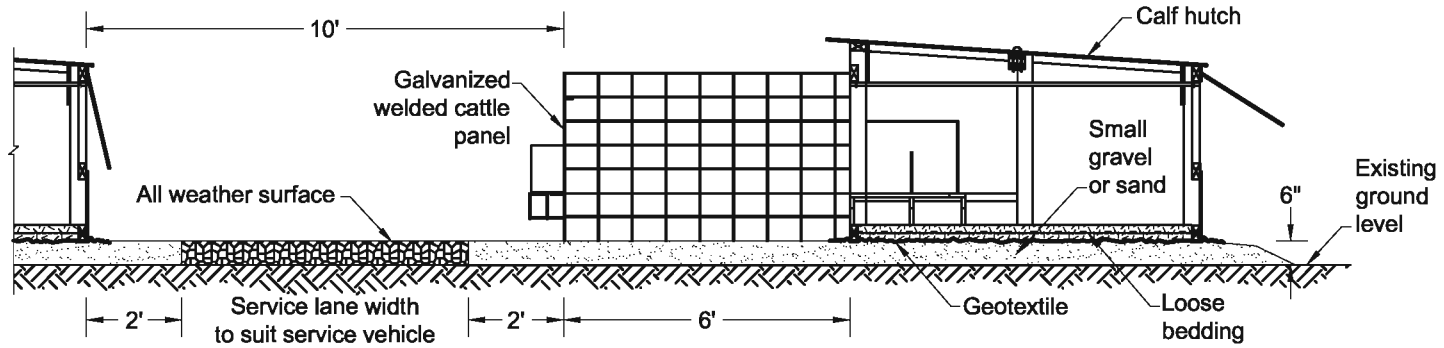
Notes :

- Structural details to be designed and constructed in accordance with local codes and conditions.
- Orient ridge perpendicular to prevailing winds.
- Face overshoot ridge opening away from prevailing winds.
- Roof ceiling must clear feed equipment.

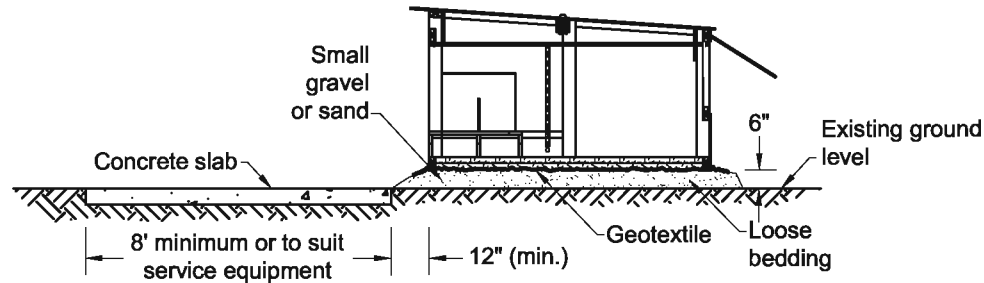
Related Detail Plans :

- ① DIP 831 Fenceline Feed Barriers (Sheet #3)
- ② DIP 851 Freestall Crossovers and Floor Surface Details
- ③ DIP 842 Watering Locations for Calves & Heifers
- ④ DIP 811 Ridge Openings for Naturally Ventilated Dairy Shelters
- ⑤ DIP 861 Gates and Penwork

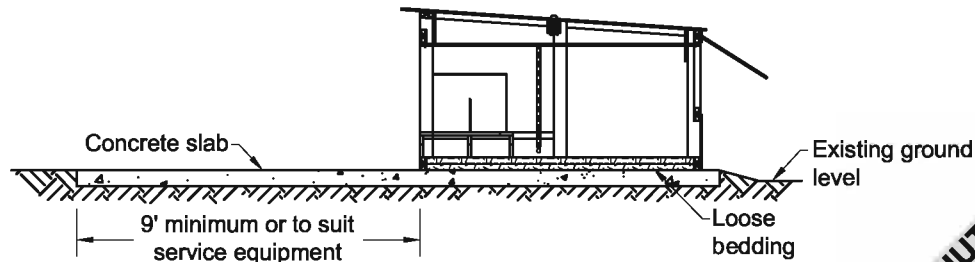
CALF HUTCHES, WEANED CALF SHELTER AND UTILITY ROOM, 18 INDIVIDUAL HUTCHES, 42 ANIMALS
 Graves, Tyson, McFarland, Wilson
 Date: 02/16/07 Sheet #4 of 5



Calf Hutch with Yard 1
Cross Section 4



Calf Hutch with Concrete Slab 1
Cross Section 5



Calf Hutch on Concrete Slab 1
Cross Section 6

**CALF HUTCHES, WEANED CALF SHELTER AND
 UTILITY ROOM, 18 INDIVIDUAL
 HUTCHES, 42 ANIMALS**
 Graves, Tyson, McFarland, Wilson
 Date: 02/16/07 Sheet #5 of 5
No. DIP 525