

See DIP 511 Weaned Calf Shelter, Weaned to 300 Pounds for additional information

**Notes :**

- Structural details to be designed and constructed in accordance with local codes and conditions.
- Designed for maximum of 6 animals per pen for 30 sq. ft per head of bedded pen and 20" feed space per head of feed space.
- Place floor to ceiling draft barriers every other pen in buildings longer than 30 ft.

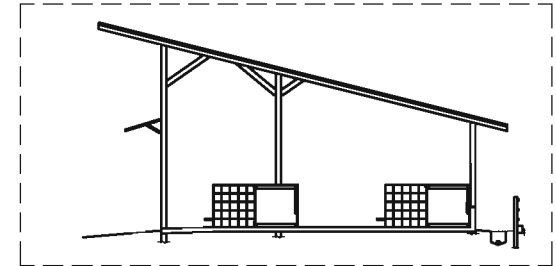
**Related Sheets :**

- ① DIP 831 Fenceline Feed Barriers (Sheet #3)
- ② DIP 851 Freestall Crossovers and Floor Surface Details
- ③ DIP 842 Watering Locations for Calves & Heifers
- ④ DIP 503 Individual Portable Calf Pen - Rear Enclosure

**BABY AND WEANED CALF SHELTER 18 INDIVIDUAL 4' X 8' PENS IN 2 ROWS AND 4 GROUP 10' X 19' PENS, 42 ANIMALS BIRTH TO 300 POUNDS**  
 Tyson, Graves, McFarland, Wilson  
 Date: 02/28/07 Sheet #1 of 3

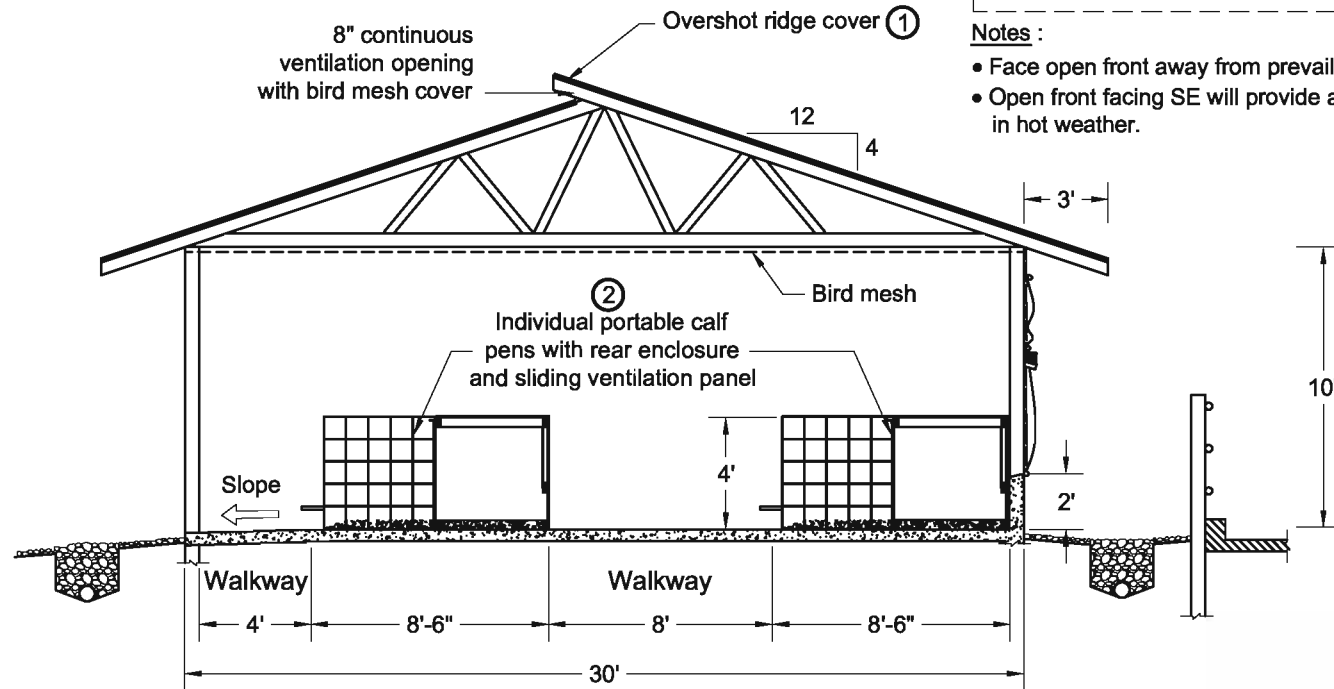
**No. DIP 522**

**Monoslope Roof Option**



**Notes :**

- Face open front away from prevailing winter winds.
- Open front facing SE will provide afternoon shading in hot weather.



Calf Pens	1
Cross Section	2

**Related Sheets :**

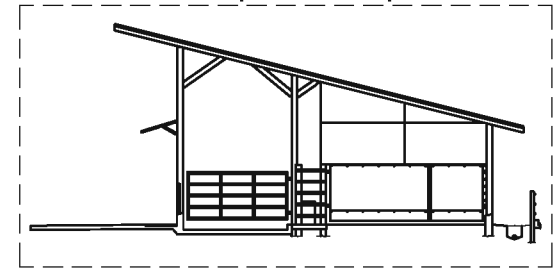
- ① DIP 811 Ridge Openings for Naturally Ventilated Dairy Shelters
- ② DIP 503 Individual Portable Calf Pen - Rear Enclosure

**Notes :**

- Structural details to be designed and constructed in accordance with local codes and conditions.
- Orient ridge perpendicular to prevailing winds.
- Face overshoot ridge opening away from prevailing winds.
- Exclude birds from roof space by covering ridge and eave openings and ceilings with 3/4" bird screen.

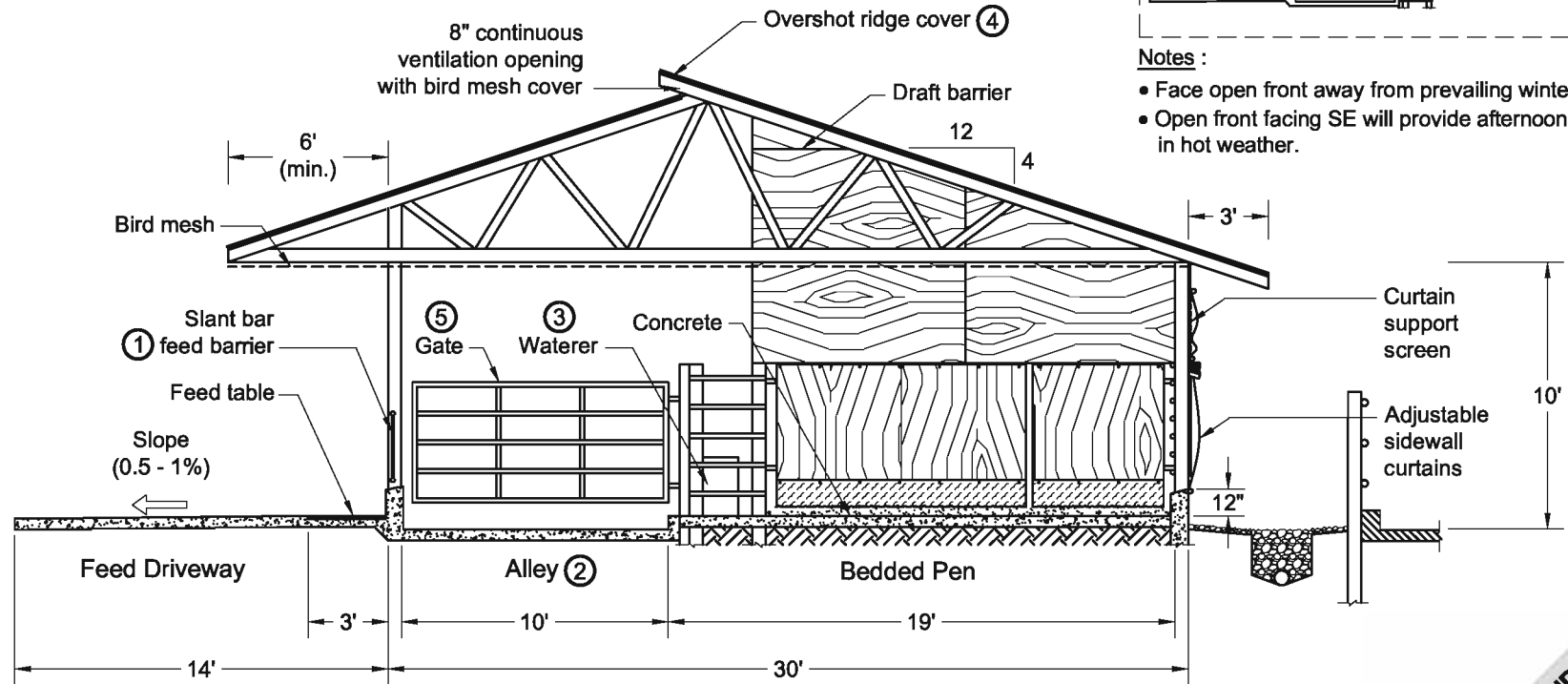
**BABY AND WEANED CALF SHELTER 18 INDIVIDUAL  
 4' X 8' PENS IN 2 ROWS AND 4 GROUP 10' X 19'  
 PENS, 42 ANIMALS BIRTH TO 300 POUNDS**  
 Tyson, Graves, McFarland, Wilson  
 Date: 02/28/07 Sheet #2 of 3

**Monoslope Roof Option**



**Notes :**

- Face open front away from prevailing winter winds.
- Open front facing SE will provide afternoon shading in hot weather.



Bedded Pens  $\frac{1}{3}$   
 Cross Section

**Notes :**

- Structural details to be designed and constructed in accordance with local codes and conditions.
- Orient ridge perpendicular to prevailing winds.
- Face overshoot ridge opening away from prevailing winds.
- Truss must be designed for overhang on one end.
- Roof overhang must clear feed equipment.
- Place floor to ceiling draft barriers every other pen in buildings longer than 30 ft.
- Exclude birds from roof space by covering ridge and eave openings and ceilings with 3/4" bird screen.

**Related Sheets :**

- ① DIP 831 Fenceline Feed Barriers (Sheet #3)
- ② DIP 851 Freestall Crossovers and Floor Surface Details
- ③ DIP 842 Watering Locations for Calves & Heifers
- ④ DIP 811 Ridge Openings for Naturally Ventilated Dairy Shelters
- ⑤ DIP 861 Gates and Penwork

**BABY AND WEANED CALF SHELTER 18 INDIVIDUAL  
 4' X 8' PENS IN 2 ROWS AND 4 GROUP 10' X 19'  
 PENS, 42 ANIMALS BIRTH TO 300 POUNDS**  
 Tyson, Graves, McFarland, Wilson  
 Date: 02/28/07 Sheet #3 of 3