

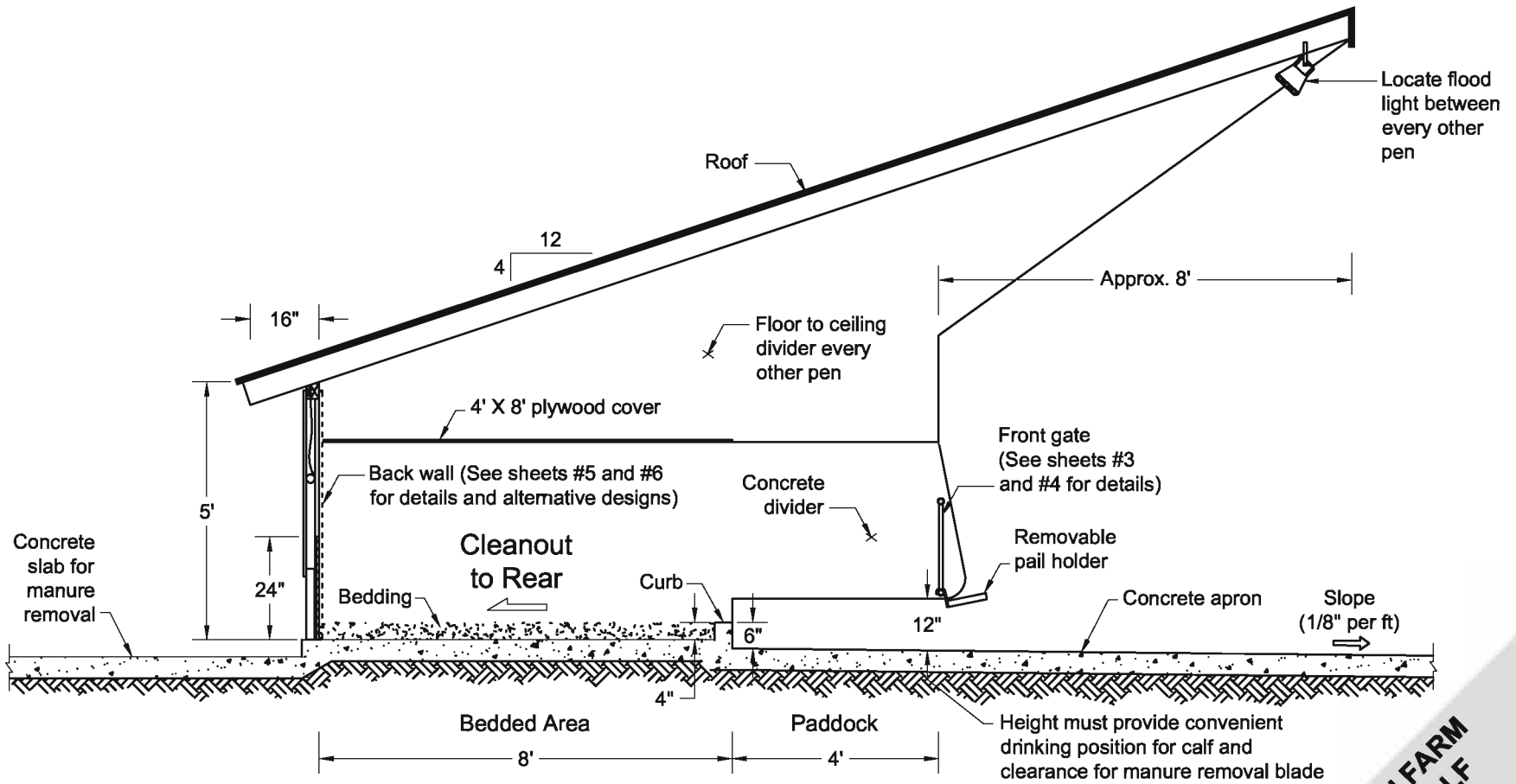
The Mason Dixon Farms Individual Pen Calf Shelter plan is adapted from a design developed and constructed at Mason Dixon Farms, Inc., Gettysburg, PA. Design features that enhance calf care include:

- Convenient access to each individual pen.
- Generous pen size and separate paved feeding paddock.
- Ventilation features and bedded area size allow protection from weather and minimize drafts during cold weather, and provide adequate air exchange and comfort during warm weather.
- Periodic cleaning of feeding area with an offset tractor-mounted scraper blade.
- Bedded area in individual pens can be mechanically cleaned from front or rear with a long armed tractor mounted hoe.

Notes :

- Structural details to be designed and constructed in accordance with local codes and conditions.
- Consult a structural engineer for roof system design details.
- Face open front away from prevailing winter winds.
- Open front facing SE will provide afternoon shading in hot weather.

**MASON-DIXON FARM
 INDIVIDUAL CALF
 PEN SHELTER**
 McFarland, Graves, Tyson, Wilson
 Date: 02/28/07 Sheet #1 of 7

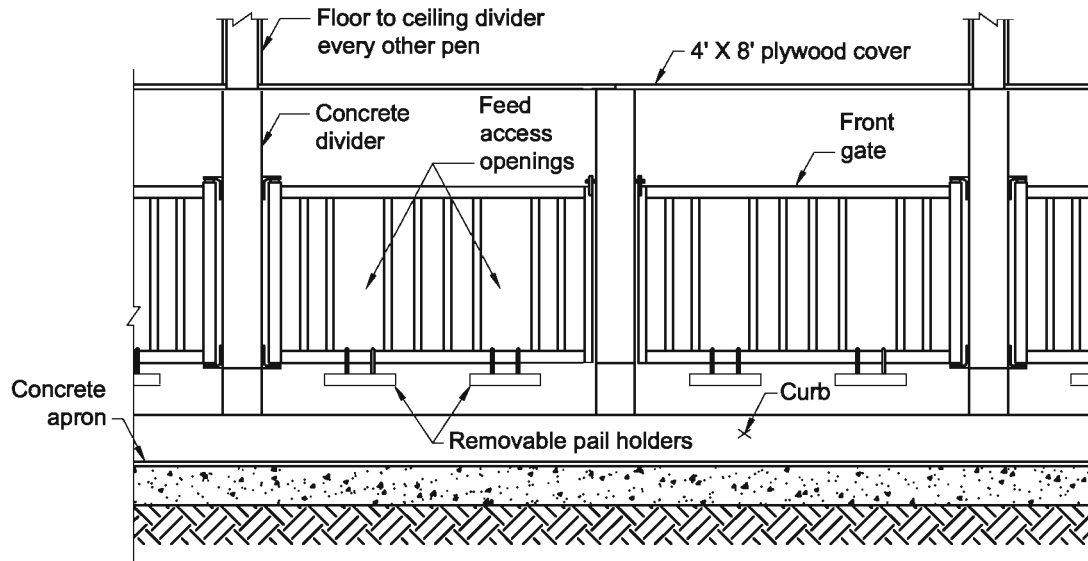


Pen Detail 1
 Cross Section 2

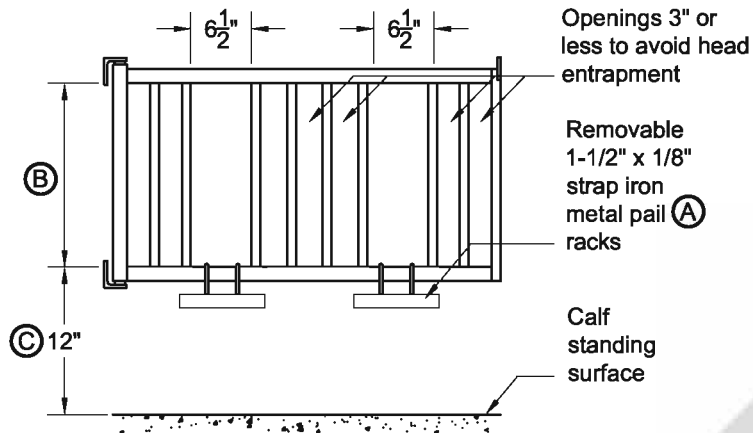
Notes :

- Structural details to be designed and constructed in accordance with local codes and conditions.
- Consult a structural engineer for roof system design details.
- Face open front away from prevailing winter winds.
- Open front facing SE will provide afternoon shading in hot weather.

**MASON-DIXON FARM
 INDIVIDUAL CALF
 PEN SHELTER**
 McFarland, Graves, Tyson, Wilson
 Date: 02/28/07 Sheet #2 of 7



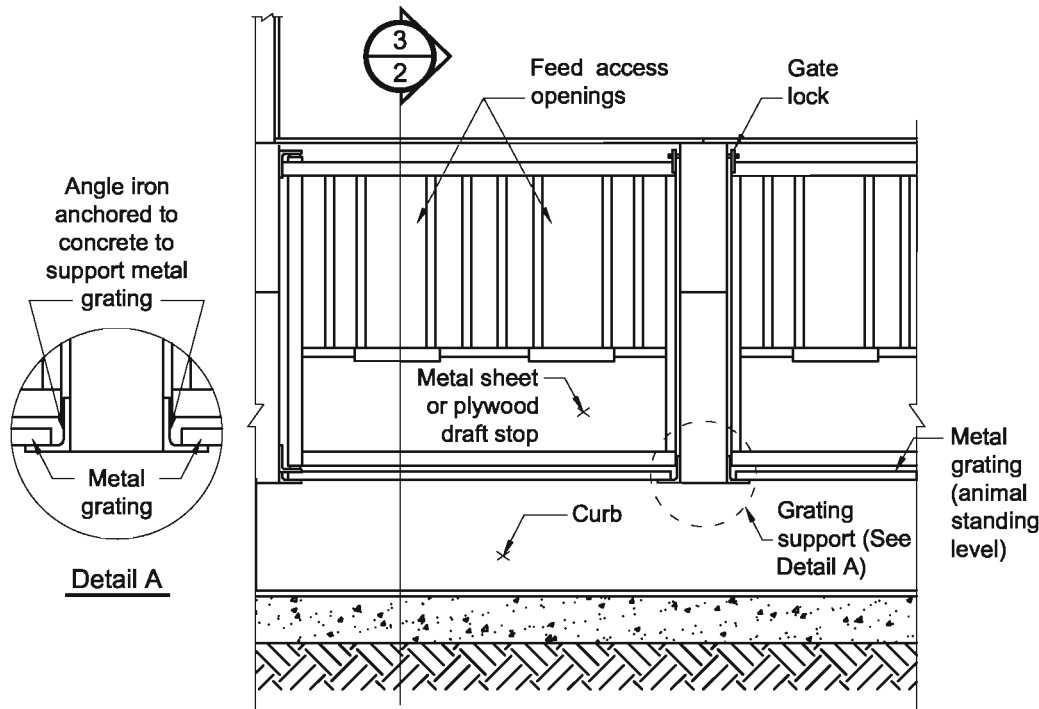
Gate Details 2
Front View 1



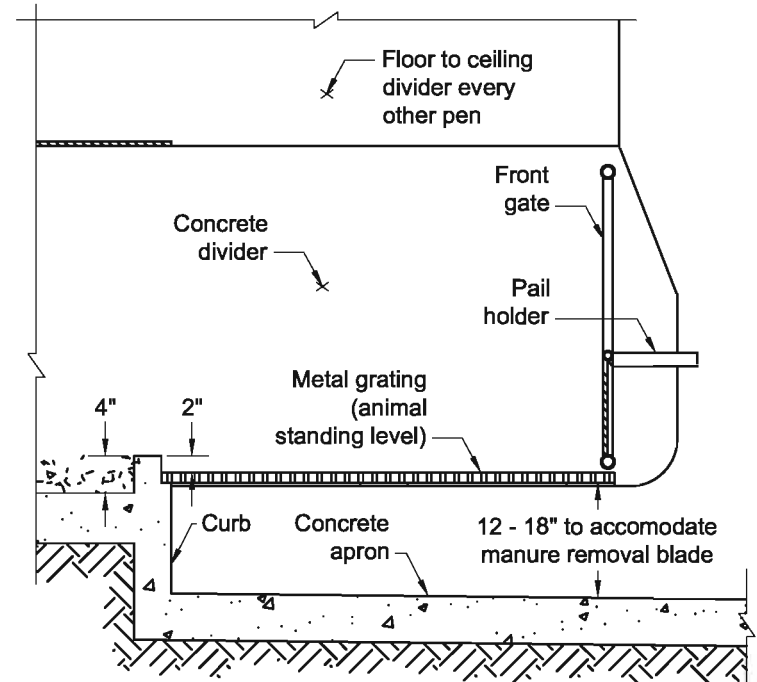
Notes :

- (A) Removable pail holders sized and mounted to correspond with size and type of pail. Top rim of pail should not be more than 12" higher than typical calf standing surface
- (B) Select top clearance to minimize calf escape and not interfere with access of larger calves.
- (C) Measure opening height from typical calf standing surface.

**MASON-DIXON FARM
INDIVIDUAL CALF
PEN SHELTER**
McFarland, Graves, Tyson, Wilson
Date: 02/28/07 Sheet #3 of 7



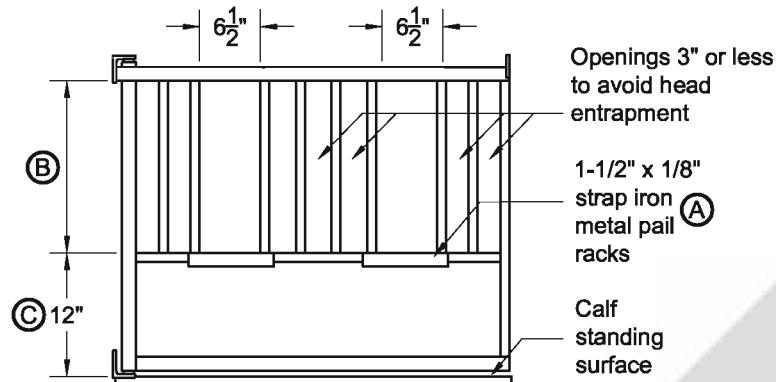
Elevated Paddock Gate Detail 3
1
 Front View



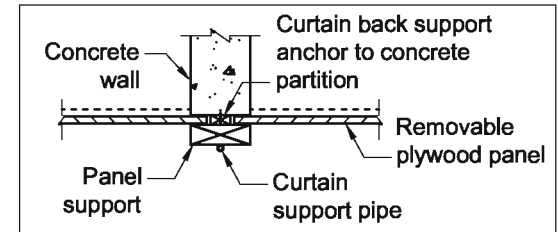
Elevated Paddock Detail 3
2
 Cross Section

Notes :

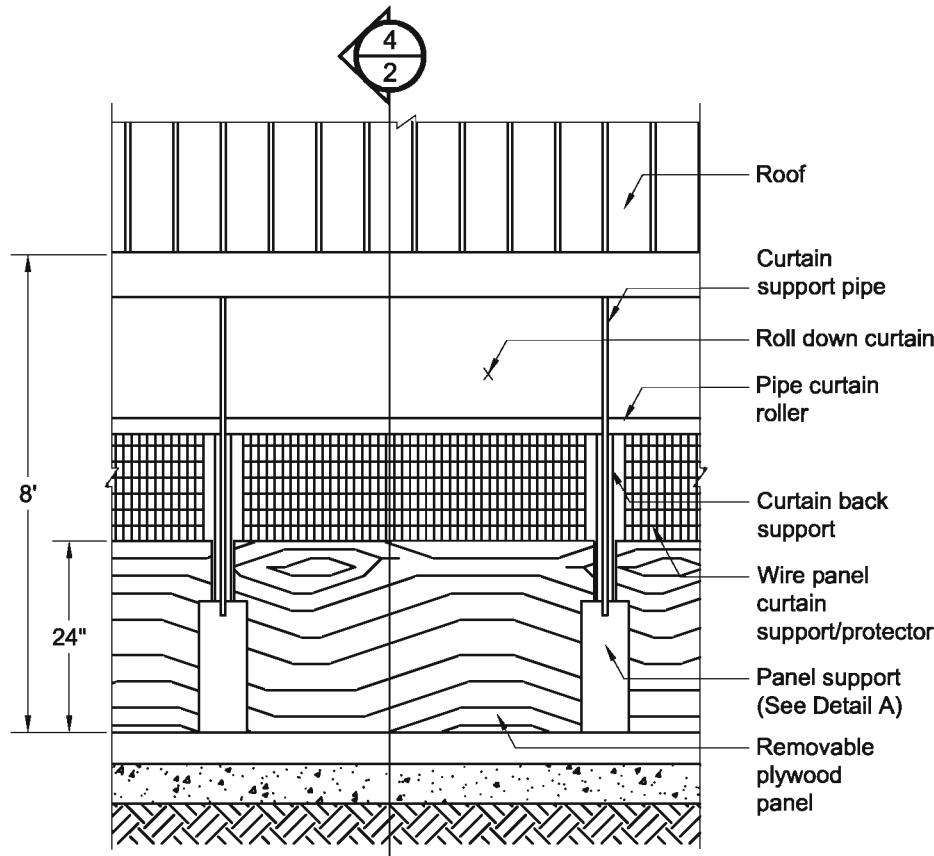
- A** Pail holders sized and mounted to correspond with size and type of pail. Top rim of pail should not be more than 12" higher than typical calf standing surface
- B** Select top clearance to minimize calf escape and not interfere with access of larger calves.
- C** Measure opening height from typical calf standing surface.



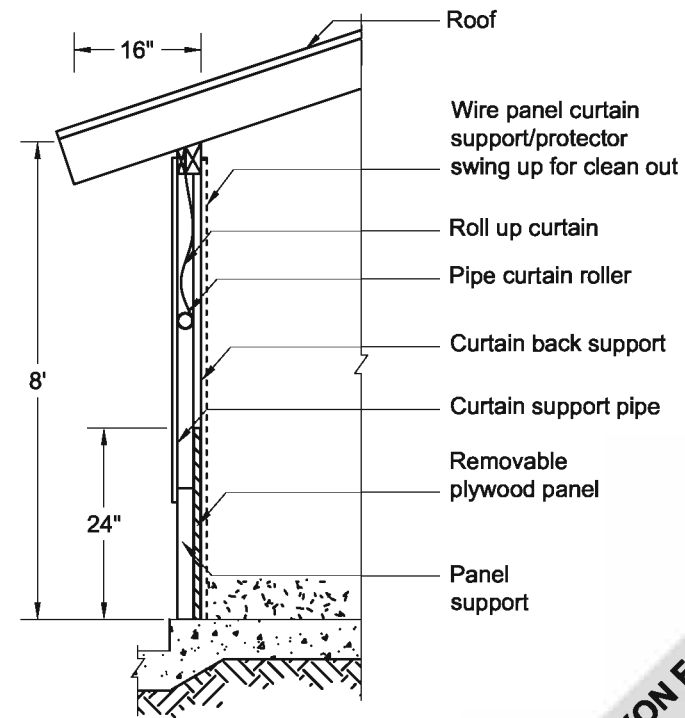
**MASON-DIXON FARM
 INDIVIDUAL CALF
 PEN SHELTER**
 McFarland, Graves, Tyson, Wilson
 Date: 02/28/07 Sheet #4 of 7



Detail A : Panel Support



Back Details for Rear Cleanout (4/1)
 Rear View

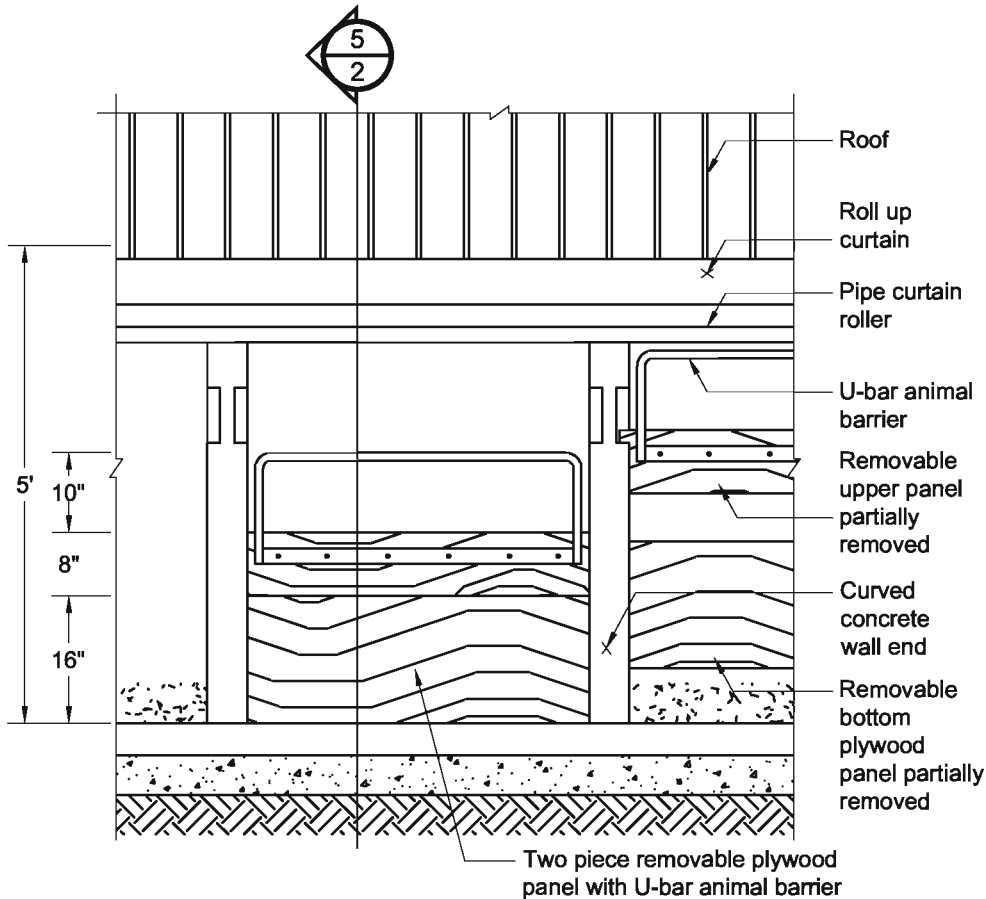


Back Details for Rear Cleanout (4/2)
 Cross Section View

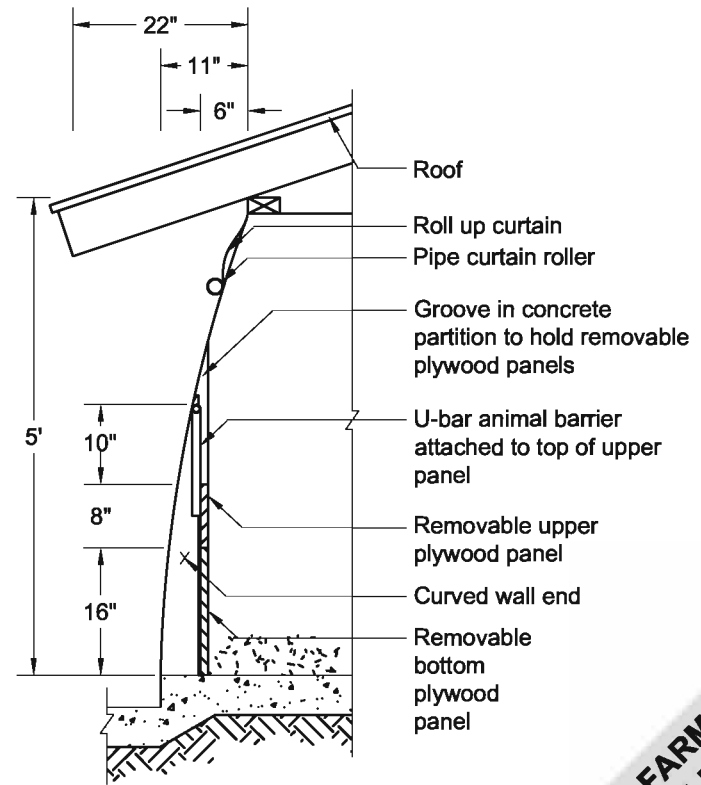
Note :

Confirm that panel support slot, eave height and over hang, and panel size permit easy panel removal.

**MASON-DIXON FARM
 INDIVIDUAL CALF
 PEN SHELTER**
 McFarland, Graves, Tyson, Wilson
 Date: 02/28/07
 Sheet #5 of 7



Back Details for Rear Cleanout 5
 Rear View 1



Alternative Back Details for Rear Cleanout 5
 Cross Section View 2

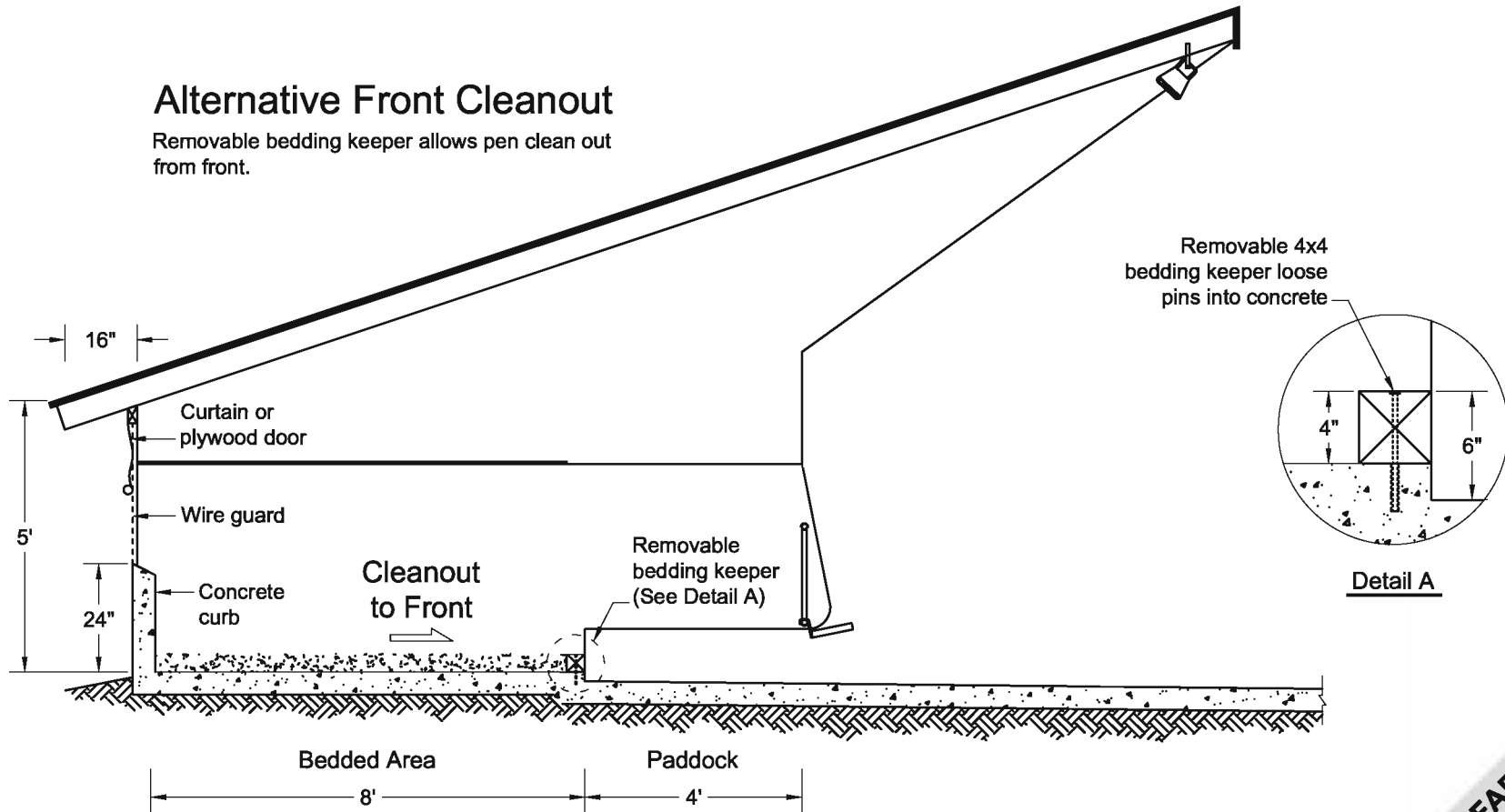
Note :

Confirm that panel support slot, eave height and over hang, and panel size permit easy panel removal.

**MASON-DIXON FARM
 INDIVIDUAL CALF
 PEN SHELTER**
 McFarland, Graves, Tyson, Wilson
 Date: 02/28/07 Sheet #6 of 7

Alternative Front Cleanout

Removable bedding keeper allows pen clean out from front.



Pen Detail for Front Cleanout 1
 Cross Section 3

Notes :

- Structural details to be designed and constructed in accordance with local codes and conditions.
- Consult a structural engineer for roof system design details.
- Face open front away from prevailing winter winds.
- Open front facing SE will provide afternoon shading in hot weather.

**MASON-DIXON FARM
 INDIVIDUAL CALF
 PEN SHELTER**
 McFarland, Graves, Tyson, Wilson
 Date: 02/28/07 Sheet #7 of 7